

County of Orange - OC Public Works  
OC Development Services  
APPROVED

This set of plans and specifications must be kept on the job at all times. It is unlawful to make any changes or alterations to these plans without written permission from OC Public Works, OC Development Services of Orange County. The stamping of these plan specifications SHALL NOT be held to permit or be an approval of the violation of any provisions of any County Ordinance or State law.

**CONSTRUCTION NOTES:**

- 1 PROTECT IN PLACE. ITEM PER DETAIL ON SHEET 9 AND 10.
- 2 CONTRACTOR TO REPLACE SURFACE IN KIND.
- 3 WHERE TRENCH ENCOUNTERS PCC, CONTRACTOR TO MATCH TO EXISTING PCC PAVEMENT, AT PCC SIDEWALK PER COUNTY OF ORANGE STD. PLAN 1205.
- 4 REMOVE AND REPLACE PCC STEPS IN KIND (5.5" RISERS).
- 5 REMOVE PULLBOX PER SEPARATE PLAN.
- 6 REMOVE AND DISPOSE OF EXISTING CLEANOUT.
- 7 REMOVE AND DISPOSE OF EXISTING SEWER LINE.
- 8 REMOVE AND RELOCATE IRRIGATION CONTROL VALVE.

**DOMESTIC WATER NOTES:**

- 1 FURNISH AND INSTALL 2" PVC SCH 80 WATER LINE, FITTINGS AND BENDS. TRENCH AND BEDDING PER DETAIL ON SHEET 9 AND GEOTECHNICAL RECOMMENDATIONS. PRUNE TREE ROOTS AS NEEDED.
- 2 FURNISH AND INSTALL 3" PVC SCH 80 WATER LINE, FITTINGS AND BENDS. TRENCH AND BEDDING PER DETAIL ON SHEET 9 AND GEOTECHNICAL RECOMMENDATIONS. PRUNE TREE ROOTS AS NEEDED.
- 3 TRENCHING AND BEDDING TO BE MODIFIED PER DETAIL ON SHEET 9 AND GEOTECHNICAL RECOMMENDATIONS WHERE GROUNDWATER IS ENCOUNTERED.
- 4 2" WATER METER CONNECTION TO WATER MAIN PER SEPARATE SCWD PLAN AND PERMIT.
- 5 3" WATER METER CONNECTION TO WATER MAIN PER SEPARATE SCWD PLAN AND PERMIT.
- 6 INSTALL 2" BACKFLOW PREVENTER PER SCWD STD. DWG. W-14 ON SHEET 12.
- 7 INSTALL 3" BACKFLOW PREVENTER PER SCWD STD. DWG. W-15 ON SHEET 12.
- 8 INSTALL TEMPORARY CAP UNTIL CONNECTING TO WATER LINE AT GANGWAY. CONTRACTOR TO COORDINATE CONNECTION TIMING WITH BELLINGHAM MARINE. SEE MARINA UTILITY PLAN FOR WATER LINE VALVE INSTALLATION. SEE TYPICAL POC DETAIL ON SHEET 11.

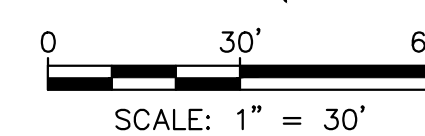
**SEWER NOTES:**

- 1 FURNISH AND INSTALL 4" PVC (SDR 35) SEWER LINE, FITTINGS AND BENDS. TRENCH AND BEDDING PER DETAIL ON SHEET 9 AND GEOTECHNICAL RECOMMENDATIONS. PRUNE TREE ROOTS AS NEEDED. USE BEDDING CLASS 1 WHERE PIPE COVER IS LESS THAN 3 FEET.
- 2 FURNISH AND INSTALL 6" PVC (SDR 35) SEWER LINE, FITTINGS AND BENDS. TRENCH AND BEDDING PER DETAIL ON SHEET 9 AND GEOTECHNICAL RECOMMENDATIONS. PRUNE TREE ROOTS AS NEEDED.
- 3 TRENCHING AND BEDDING TO BE MODIFIED PER DETAIL ON SHEET 9 AND GEOTECHNICAL RECOMMENDATIONS WHERE GROUNDWATER IS ENCOUNTERED.
- 4 CONSTRUCT SEWER MANHOLE PER SCWD STD. DWG. S-1 ON SHEET 13.
- 5 INSTALL 45° BEND OR 90° BEND PER PLAN.
- 6 INSTALL SEWER CLEANOUT PER SCWD STD. DWG. S-4 ON SHEET 14.
- 7 CONNECT 4" SEWER LATERAL TO EXISTING SEWER LINE PER SEPARATE SCWD PLAN AND PERMIT.
- 8 CONNECT 6" SEWER LATERAL TO EXISTING SEWER LINE PER SEPARATE SCWD PLAN AND PERMIT.
- 9 INSTALL TEMPORARY CAP UNTIL CONNECTING TO SEWER LINE AT GANGWAY. CONTRACTOR TO COORDINATE CONNECTION TIMING WITH BELLINGHAM MARINE. SEE TYPICAL POC DETAIL ON SHEET 11.
- 10 CONNECT 4" SEWER LATERAL TO SCWD SEWER CLEANOUT.
- 11 FURNISH AND INSTALL 6" PVC (SDR-26) SEWER LATERAL AND DROP LATERAL CONNECTION TO MANHOLE. SEE DETAIL ON SHEET 14. SEE SCWD PLAN & PERMIT.
- 12 CONNECT CLEANOUT TO EXISTING SEWER LINE.

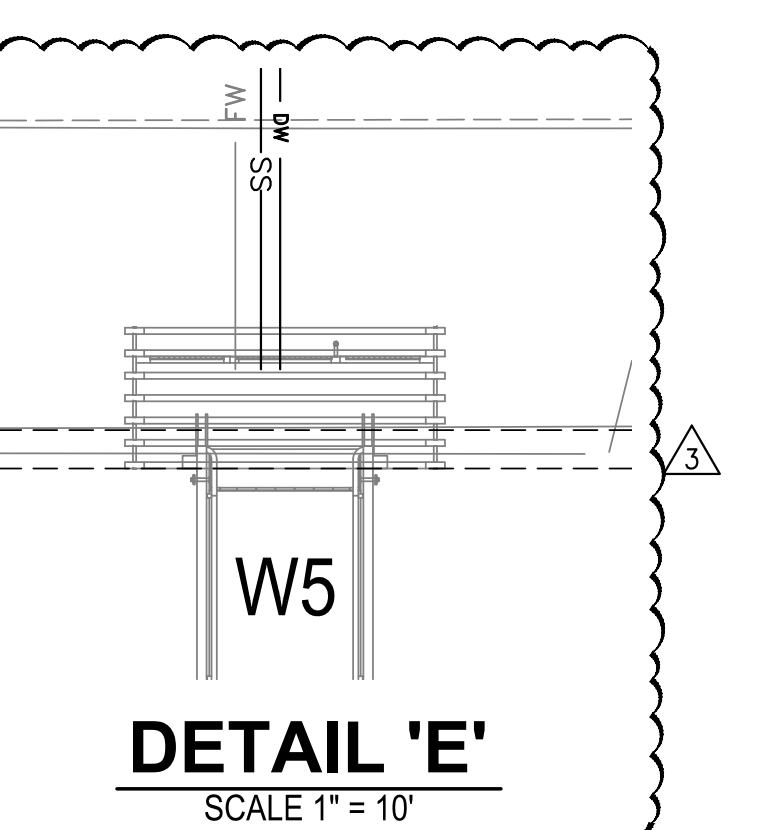
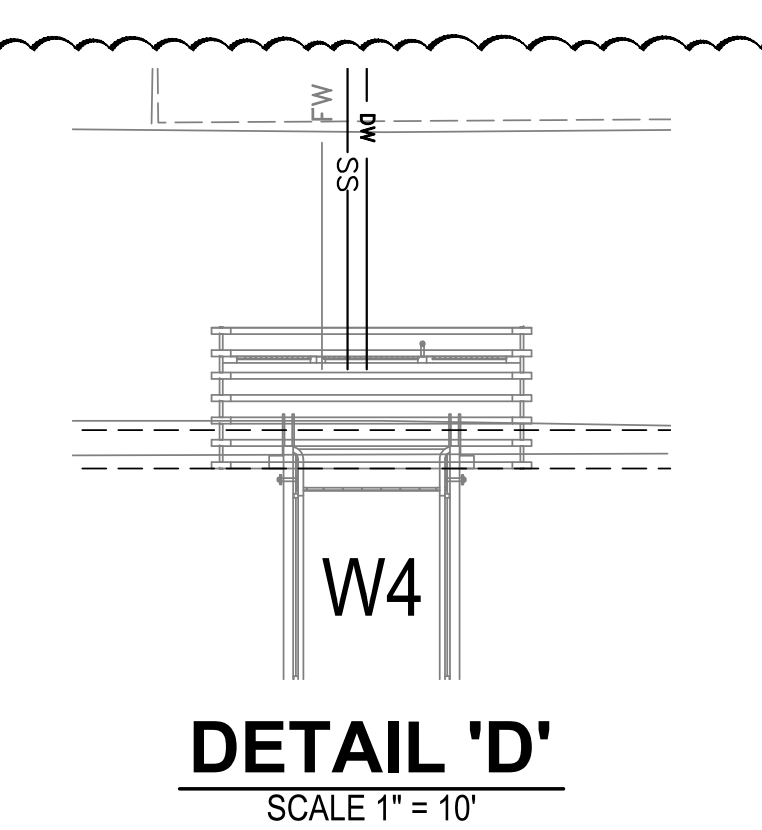
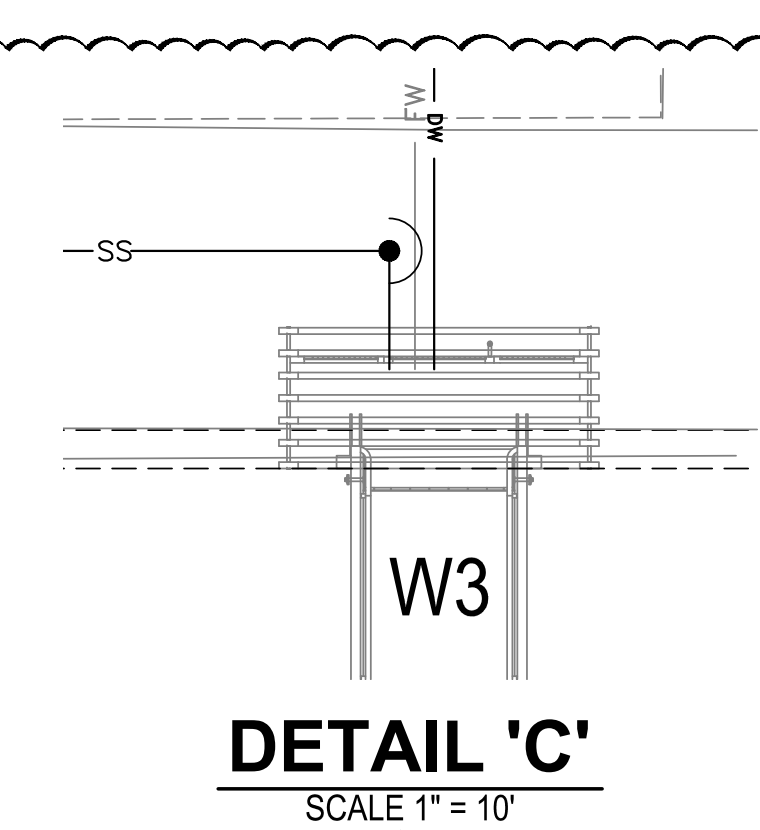
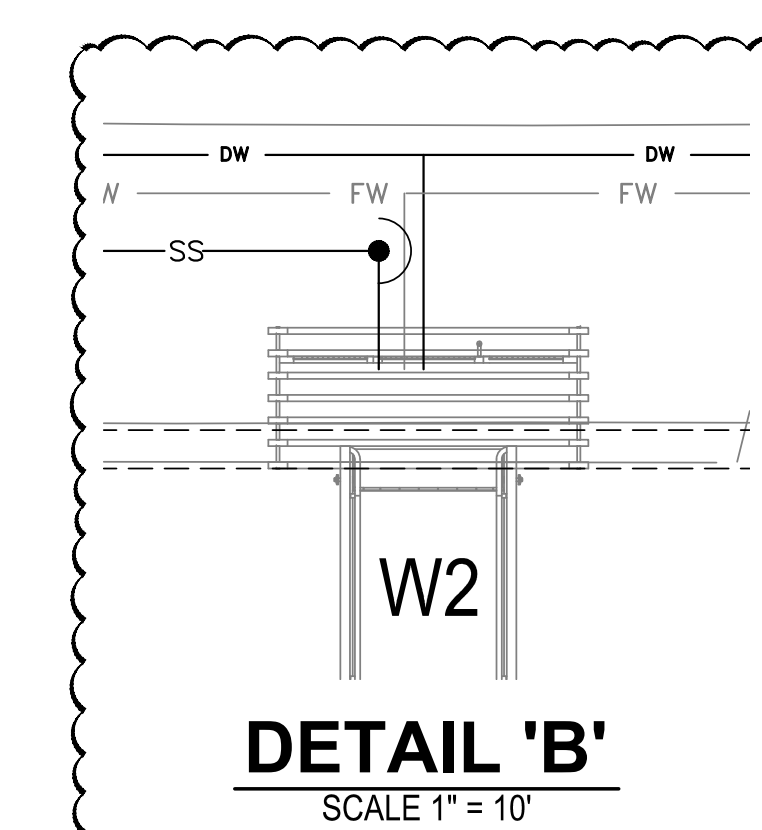
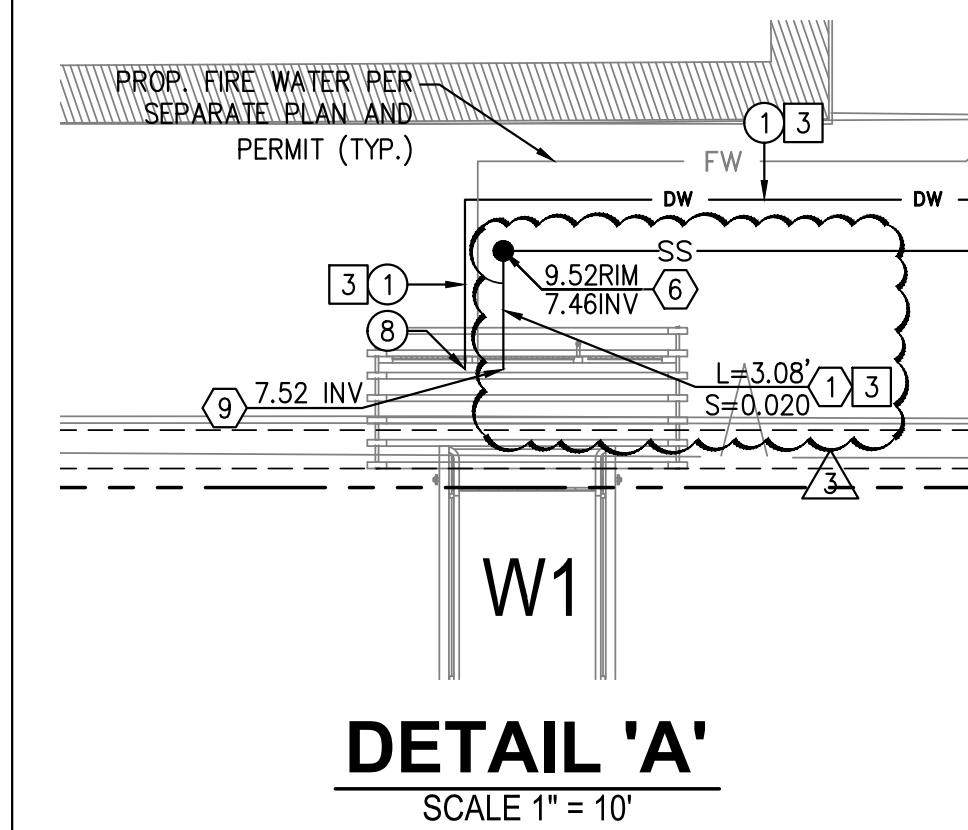
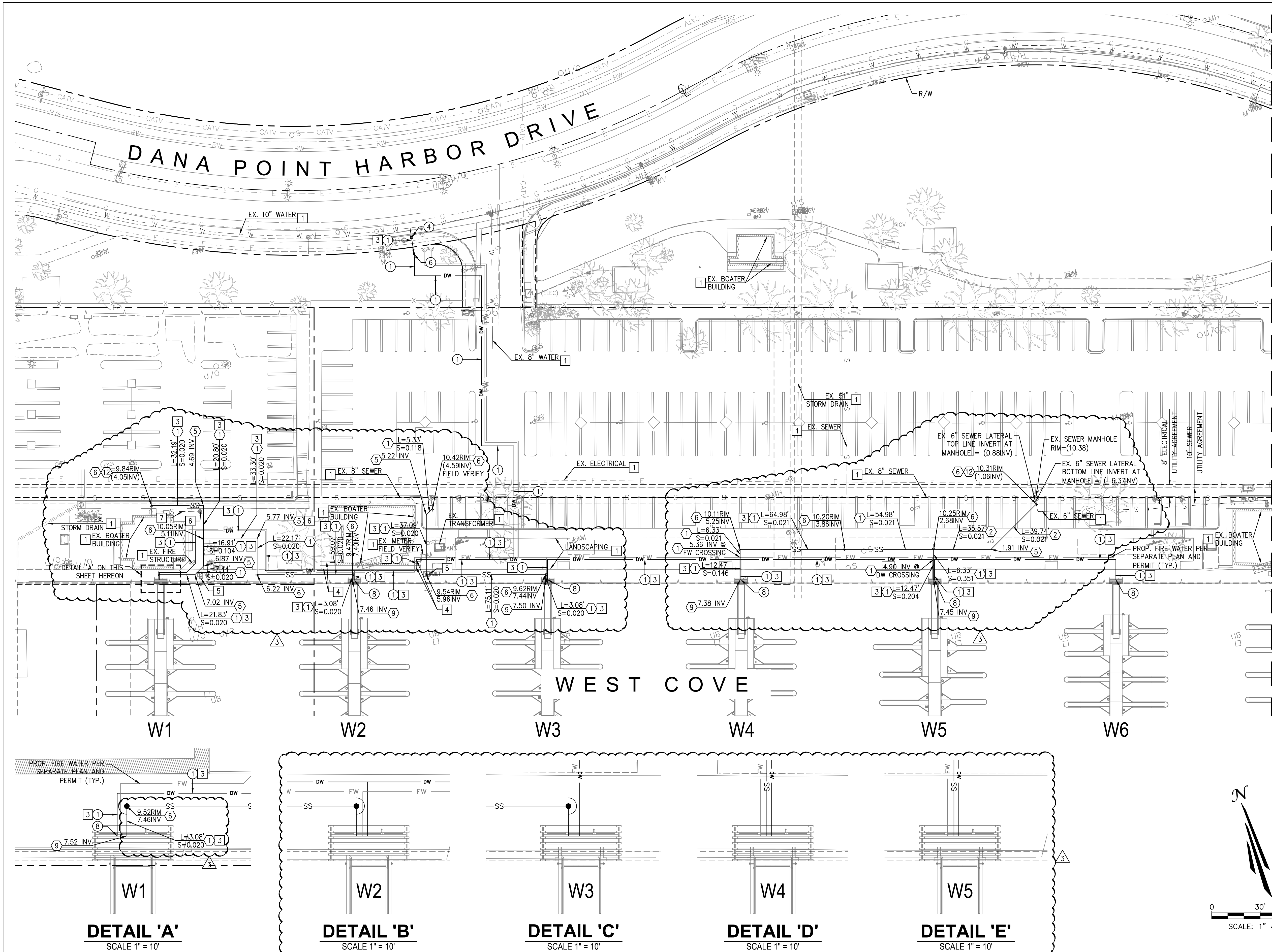
**NOTE TO CONTRACTOR:**

IT IS THE CONTRACTOR'S RESPONSIBILITY TO REPAIR ANY UTILITIES THAT ARE IN CONFLICT WITH PROPOSED IMPROVEMENTS. CONTRACTOR TO REPAIR, CUT, AND CAP ANY DAMAGED LANDSCAPE OR IRRIGATION. CONTRACTOR TO PROTECT ALL EXISTING TREES.

EXISTING UTILITY LOCATIONS HAVE NOT BEEN VERIFIED. CONTRACTOR TO FIELD VERIFY LOCATION AND INVERTS OF EXISTING UTILITIES AND INFORM ENGINEER OF ANY DISCREPANCIES OR CHANGES NECESSARY TO THE PROPOSED UTILITIES. CONTRACTOR TO REPAIR ANY EXISTING UTILITIES DAMAGED DURING CONSTRUCTION OF PROPOSED UTILITIES.



MATCHLINE - SEE SHEET 4



NO.	DATE	DESCRIPTION	BY
3	12/12/23	SEWER AND WATER LINE REVISIONS AND CONSTRUCTION NOTE UPDATES. DETAILS B-E ADDED.	
REVISIONS			

PREPARED UNDER THE SUPERVISION OF:

**TAIT**  
Since 1964

701 N. Parkcenter Drive  
Santa Ana, CA 92705  
p: 714/560/8200 f: 714/560/8211  
www.tait.com

Los Angeles Sacramento San Francisco Dallas Phoenix  
Ontario San Diego Boise Denver Portland

JACOB VANDERVIS R.C.E. No. C46301 DATE 12/14/23

GEOTECHNICAL ENGINEER SEAL

PROJECT NUMBER: ME0381

ENGINEER / DESIGNER: TAIT

PROJECT MANAGER: DM

CHECKED BY: JV

**DANA POINT HARBOR REVITALIZATION**

Harbor Drive  
Dana Point, CA 92629

**PRIVATE DOMESTIC WATER AND SEWER PLAN  
WEST COVE PRIVATE UTILITY PLAN**

SCALE: SEE ON SHEET

DRAWN BY: TAIT

DATE: 12/14/2023

DRAWING: ME0381

SHEET NO.: 3