

IN THE CITY OF DANA POINT, COUNTY OF ORANGE, STATE OF CALIFORNIA

DANA POINT HARBOR PRIVATE DOMESTIC WATER AND SEWER PLAN

34571 GOLDEN LANTERN STREET
DANA POINT, CA 92629
PREPARED FOR:
DANA POINT HARBOR PARTNERS, LLC
1100 NEWPORT CENTER DR. STE 200
NEWPORT BEACH, CA 92660

Building&Safety: Roshanak Amirazizi 6/21/2023

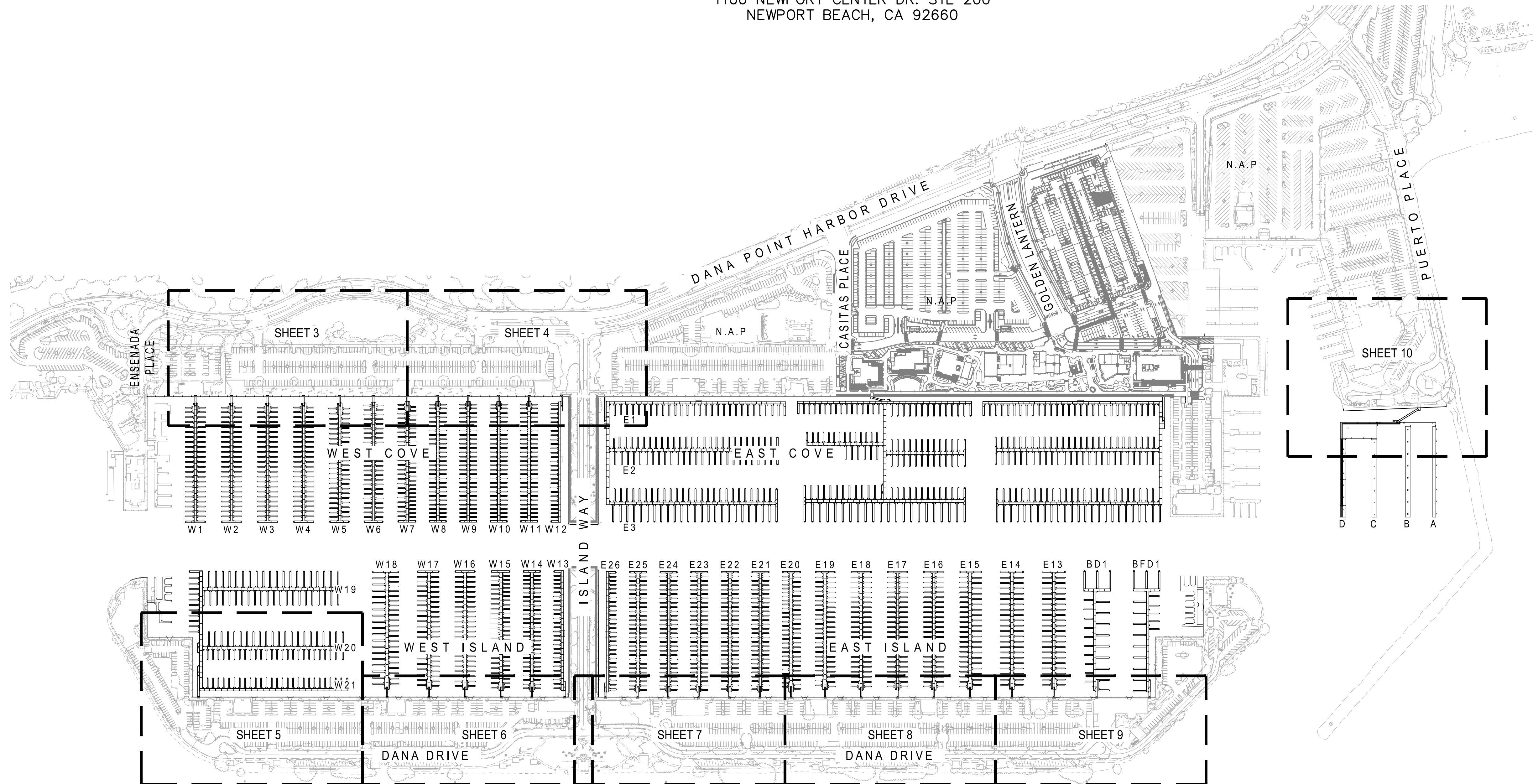
Revision: 2
Permits: PLB22-0127-R2

County of Orange - OC Public Works
OC Development Services
APPROVED

This set of plans and specifications must be kept on the job at all times. It is unlawful to make any changes or alterations to these plans without written permission of Orange County. The stamping of these plan specifications SHALL NOT be held to permit or be an approval of the violation of any provisions of any County Ordinance or State law.

Hadi Tabatabaee
BUILDING OFFICIAL

2

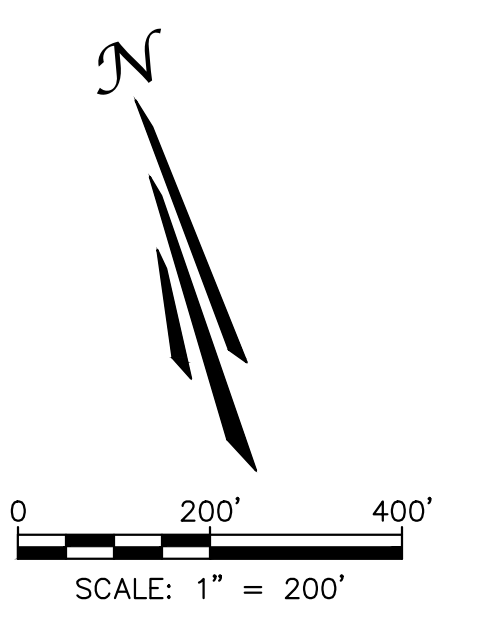


LEGEND

- S --- EXISTING SEWER
- ==== EXISTING STORM DRAIN
- W --- EXISTING WATER
- RW --- EXISTING RECYCLED WATER
- E --- EXISTING ELECTRIC
- CATV --- EXISTING COMMUNICATIONS
- G --- EXISTING GAS
- DW— PROPOSED DOMESTIC WATER (PRIVATE)
- FW— PROPOSED FIRE WATER
- SS— PROPOSED SEWER (PRIVATE)
- ⊙ PROPOSED SEWER MANHOLE
- - - - - PROPERTY LINE
- - - - - CENTERLINE

ABBREVIATIONS

- ⊕ CENTERLINE
- DW DOMESTIC WATER
- ESMT EASEMENT
- (E) EXISTING
- FF FINISHED FLOOR
- FS FIRE SERVICE
- LAT LATERAL
- (P) PROPOSED
- ℙ PROPERTY LINE
- RCP REINFORCED CONCRETE PIPE
- SCWD SOUTH COAST WATER DISTRICT
- SFM SEWER FORCE MAIN
- SMH SEWER MANHOLE
- SS SANITARY SEWER
- OCPW ORANGE COUNTY PUBLIC WORKS



UNDERGROUND SERVICE ALERT

811 Call: TOLL FREE
1-800-422-4133

KNOW WHAT'S BELOW.
CALL BEFORE YOU DIG.
TWO WORKING DAYS BEFORE YOU DIG

UNAUTHORIZED CHANGES & USES:

THE ENGINEER PREPARING THESE PLANS WILL NOT BE RESPONSIBLE FOR, OR LIABLE FOR, UNAUTHORIZED CHANGES TO OR USES OF THESE PLANS. ALL CHANGES TO THE PLANS MUST BE IN WRITING AND MUST BE APPROVED BY THE PREPARER OF THESE PLANS. CONSTRUCTION CONTRACTOR AGREES THAT IN ACCORDANCE WITH GENERALLY ACCEPTED CONSTRUCTION PRACTICES, CONSTRUCTION CONTRACTOR WILL BE REQUIRED TO ASSUME SOLE AND COMPLETE RESPONSIBILITY FOR JOB SITE CONDITIONS DURING THE COURSE OF CONSTRUCTION OF THE PROJECT, INCLUDING SAFETY OF ALL PERSONS AND PROPERTY, THAT THIS REQUIREMENT SHALL BE MADE TO APPLY CONTINUOUSLY AND NOT BE LIMITED TO NORMAL WORKING HOURS, AND CONSTRUCTION CONTRACTOR FURTHER AGREES TO DEFEND, INDEMNIFY AND HOLD DESIGN PROFESSIONAL HARMLESS FROM ANY AND ALL LIABILITY, REAL OR ALLEGED, IN CONNECTION WITH THE PERFORMANCE OF WORK ON THIS PROJECT, EXCEPTING LIABILITY ARISING FROM THE SOLE NEGLIGENCE OF DESIGN PROFESSIONAL.

ENGINEERS NOTE TO CONTRACTOR:

THE EXISTENCE AND LOCATION OF ANY UNDERGROUND UTILITIES, PIPES, AND/OR STRUCTURES SHOWN ON THESE PLANS WERE OBTAINED BY A SEARCH OF AVAILABLE RECORDS. TO THE BEST OF OUR KNOWLEDGE, THERE ARE NO EXISTING UTILITIES EXCEPT AS SHOWN ON THESE PLANS. THE CONTRACTOR SHALL ASCERTAIN THE TRUE VERTICAL AND HORIZONTAL LOCATION OF THOSE UNDERGROUND UTILITIES TO BE USED AND SHALL BE RESPONSIBLE FOR ANY DAMAGE TO ANY PUBLIC OR PRIVATE UTILITIES, SHOWN OR NOT SHOWN HEREON. IF THE CONTRACTOR ENCOUNTERS ANY DISCREPANCIES, CONFLICTS OR AREAS WHICH HE FEELS UNWORKABLE, HE SHALL NOTIFY THE GRADING ENGINEER IMMEDIATELY PRIOR TO CONTINUING OR DEVIATING FROM THIS PLAN.

NO.	DATE	DESCRIPTION	BY
REVISIONS			

PREPARED UNDER THE SUPERVISION OF:

TAIT
Since 1964

701 N. Parkcenter Drive
Santa Ana, CA 92705
p: 714/560/8200 f: 714/560/8211
www.tait.com

Los Angeles Sacramento San Francisco Dallas Phoenix
Ontario San Diego Boise Denver Portland

JACOB VANDERVIS R.C.E. No. C46301 DATE 5/5/23

GEOTECHNICAL ENGINEER SEAL

PROJECT NUMBER: ME0381

ENGINEER / DESIGNER: TAIT

PROJECT MANAGER: DM

CHECKED BY: JV

DANA POINT HARBOR REVITALIZATION

Harbor Drive
Dana Point, CA 92629

**PRIVATE DOMESTIC WATER AND SEWER PLAN
TITLE SHEET**

SCALE:	SEE ON SHEET
DRAWN BY:	TAIT
DATE:	5/5/2023
DRAWING:	ME0381
SHEET NO.:	1

K:\Drawings\ME\ME03810 - Dana Point Harbor\ENG\Construction Drawings\Warmo\Gangways Phase\Private Utilities\ME03810_INDEX_PH1_UT_PRIV.dwg PLOTTED: 5/5/2023 4:06:57 PM BY Chris Dickel

**County of Orange - OC Public Works
OC Development Services
APPROVED**

This set of plans and specifications must be kept on the job at all times. It is unlawful to make any changes or alterations to these plans without written permission from OC Public Works, OC Development Services of Orange County. The stamping of these plan specifications SHALL NOT be held to permit or be an approval of the violation of any provisions of any County Ordinance or State law.

2

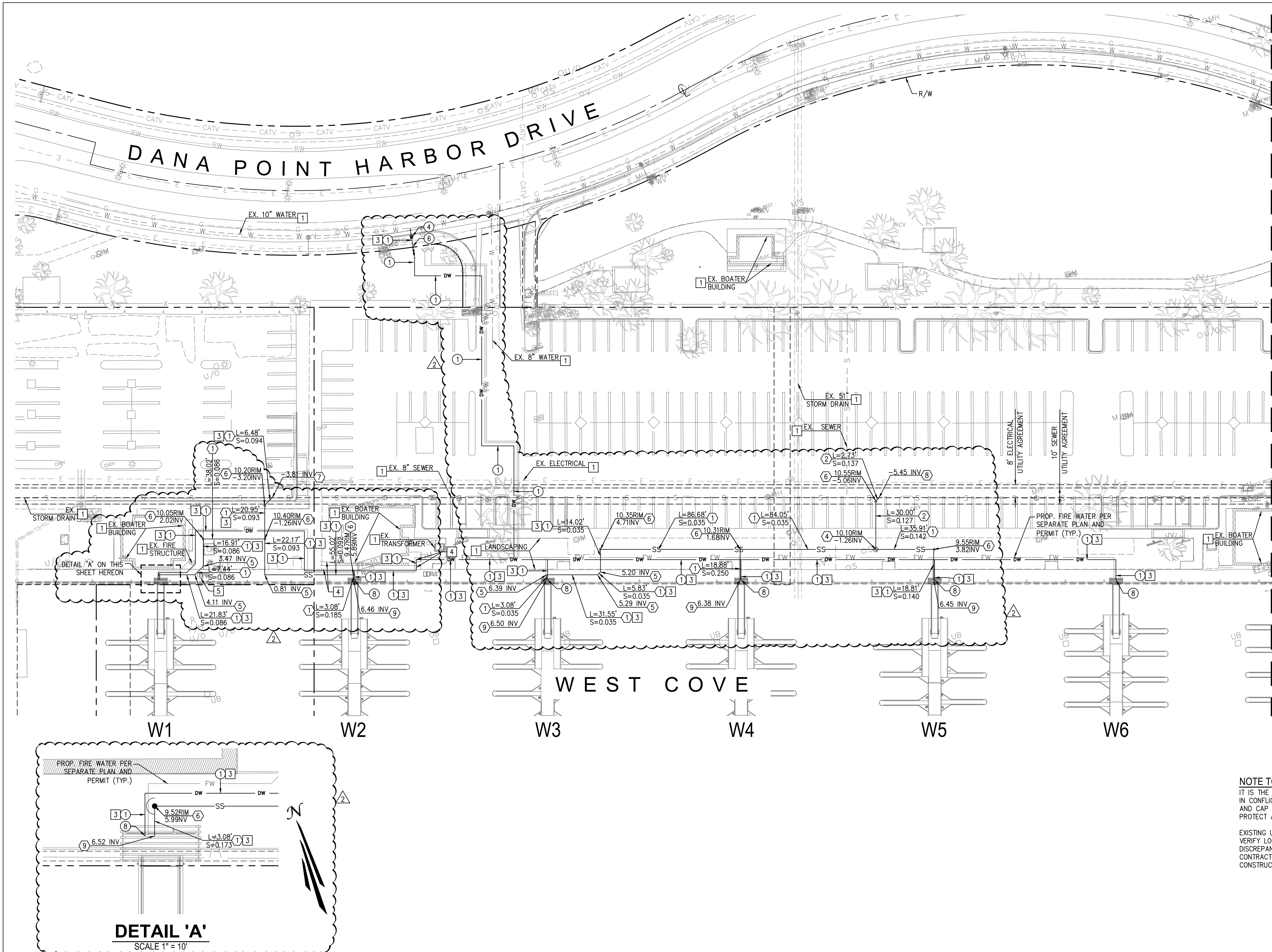
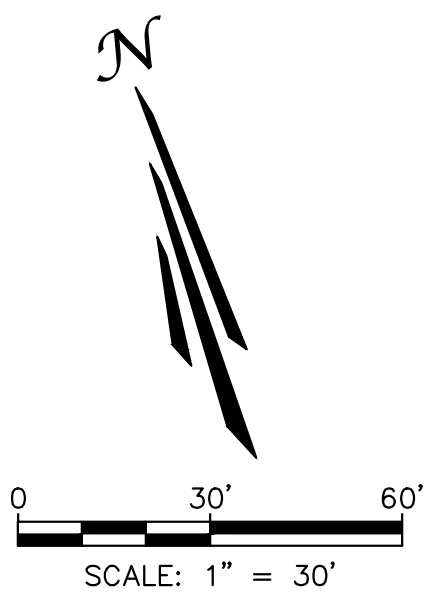
- CONSTRUCTION NOTES**
- 1 PROTECT IN PLACE. ITEM PER PLAN.
 - 2 CONTRACTOR TO REPLACE SURFACE IN KIND.
 - 3 WHERE TRENCH ENCOUNTERS PCC, CONTRACTOR TO MATCH TO EXISTING PCC PAVEMENT, AT PCC SIDEWALK PER COUNTY OF ORANGE STD. PLAN 1205.
 - 4 REMOVE AND REPLACE PCC STEPS IN KIND (5.5" RISERS).
 - 5 REMOVE PULLBOX PER SEPARATE PLAN.

- DOMESTIC WATER NOTES:**
- 1 FURNISH AND INSTALL 2" PVC SCH 80 WATER LINE, FITTINGS AND BENDS. TRENCH AND BEDDING PER DETAIL ON SHEET 9 AND GEOTECHNICAL RECOMMENDATIONS. PRUNE TREE ROOTS AS NEEDED.
 - 2 FURNISH AND INSTALL 3" PVC SCH 80 WATER LINE, FITTINGS AND BENDS. TRENCH AND BEDDING PER DETAIL ON SHEET 9 AND GEOTECHNICAL RECOMMENDATIONS. PRUNE TREE ROOTS AS NEEDED.
 - 3 TRENCHING AND BEDDING TO BE MODIFIED PER DETAIL ON SHEET 9 AND GEOTECHNICAL RECOMMENDATIONS WHERE GROUNDWATER IS ENCOUNTERED.
 - 4 2" WATER METER CONNECTION TO WATER MAIN PER SEPARATE SCWD PLAN AND PERMIT.
 - 5 3" WATER METER CONNECTION TO WATER MAIN PER SEPARATE SCWD PLAN AND PERMIT.
 - 6 INSTALL 2" BACKFLOW PREVENTER PER SCWD STD. DWG. W-14 ON SHEET 12.
 - 7 INSTALL 3" BACKFLOW PREVENTER PER SCWD STD. DWG. W-15 ON SHEET 12.
 - 8 INSTALL TEMPORARY CAP UNTIL CONNECTING TO WATER LINE AT GANGWAY. CONTRACTOR TO COORDINATE CONNECTION TIMING WITH BELLINGHAM MARINE. SEE MARINA UTILITY PLAN FOR WATER LINE VALVE INSTALLATION. SEE TYPICAL POC DETAIL ON SHEET 11.

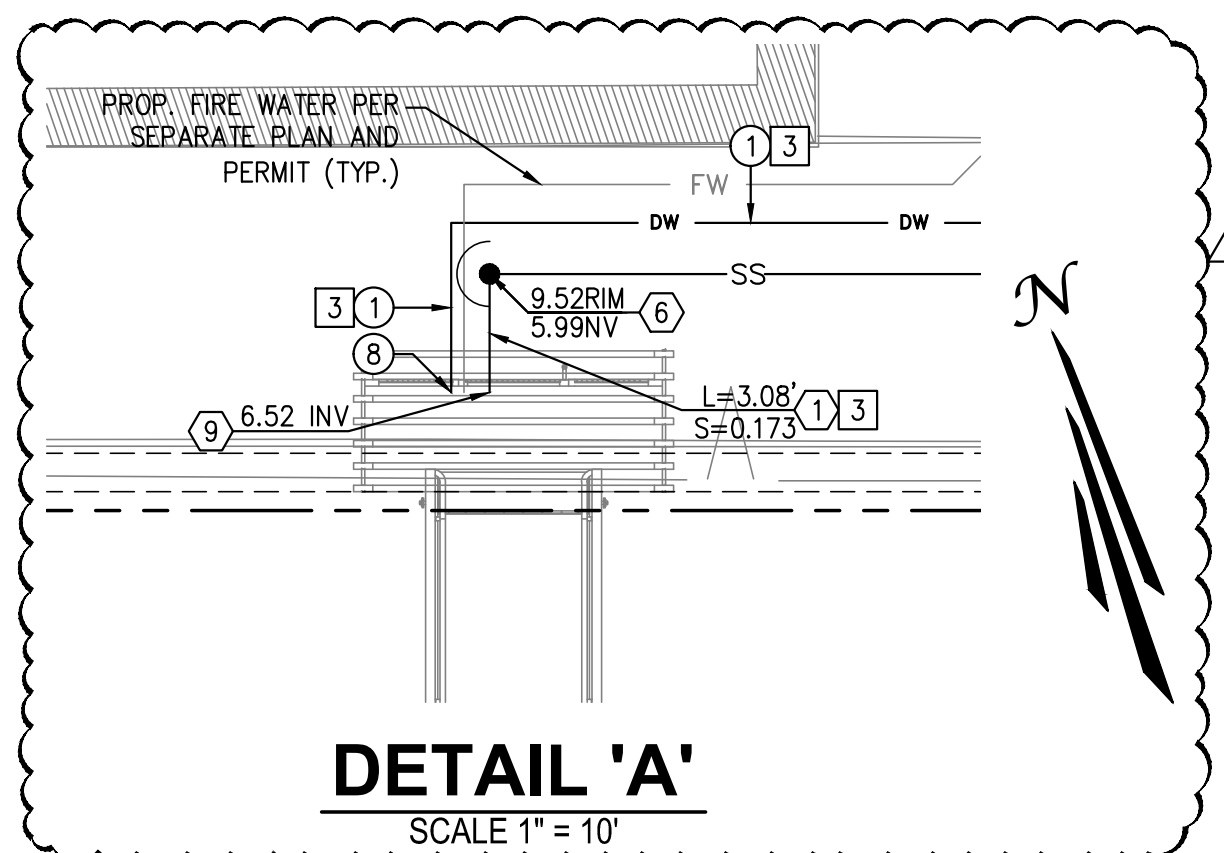
- SEWER NOTES:**
- 1 FURNISH AND INSTALL 4" PVC (SDR 35) SEWER LINE, FITTINGS AND BENDS. TRENCH AND BEDDING PER DETAIL ON SHEET 9 AND GEOTECHNICAL RECOMMENDATIONS. PRUNE TREE ROOTS AS NEEDED.
 - 2 FURNISH AND INSTALL 6" PVC (SDR 35) SEWER LINE, FITTINGS AND BENDS. TRENCH AND BEDDING PER DETAIL ON SHEET 9 AND GEOTECHNICAL RECOMMENDATIONS. PRUNE TREE ROOTS AS NEEDED.
 - 3 TRENCHING AND BEDDING TO BE MODIFIED PER DETAIL ON SHEET 9 AND GEOTECHNICAL RECOMMENDATIONS WHERE GROUNDWATER IS ENCOUNTERED.
 - 4 CONSTRUCT SEWER MANHOLE PER SCWD STD. DWG. S-1 ON SHEET 13. ALL MANHOLES SHALL BE LINED USING LINER FROM APPROVED MATERIAL LIST AND COMPOSITE LIDS.
 - 5 INSTALL 45° BEND OR 90° BEND PER PLAN.
 - 6 INSTALL SEWER CLEANOUT PER SCWD STD. DWG. S-10 ON SHEET 14.
 - 7 CONNECT 4" SEWER LATERAL TO EXISTING SEWER LINE PER SEPARATE SCWD PLAN AND PERMIT.
 - 8 CONNECT 6" SEWER LATERAL TO EXISTING SEWER LINE PER SEPARATE SCWD PLAN AND PERMIT.
 - 9 INSTALL TEMPORARY CAP UNTIL CONNECTING TO SEWER LINE AT GANGWAY. CONTRACTOR TO COORDINATE CONNECTION TIMING WITH BELLINGHAM MARINE. SEE TYPICAL POC DETAIL ON SHEET 11.

NOTE TO CONTRACTOR:
IT IS THE CONTRACTOR'S RESPONSIBILITY TO REPAIR ANY UTILITIES THAT ARE IN CONFLICT WITH PROPOSED IMPROVEMENTS. CONTRACTOR TO REPAIR, CUT, AND CAP ANY DAMAGED LANDSCAPE OR IRRIGATION. CONTRACTOR TO PROTECT ALL EXISTING TREES.

EXISTING UTILITY LOCATIONS HAVE NOT BEEN VERIFIED. CONTRACTOR TO FIELD VERIFY LOCATION OF EXISTING UTILITIES AND INFORM ENGINEER OF ANY DISCREPANCIES OR CHANGES NECESSARY TO THE PROPOSED UTILITIES. CONTRACTOR TO REPAIR ANY EXISTING UTILITIES DAMAGED DURING CONSTRUCTION OF PROPOSED UTILITIES.



MATCHLINE - SEE SHEET 4



NO.	DATE	DESCRIPTION	BY
Δ	06/02/23	SEWER AND WATER LINE REVISIONS AND CONSTRUCTION NOTE UPDATES. ADDED DETAIL 'A' TO PLAN.	
REVISIONS			

PREPARED UNDER THE SUPERVISION OF:

TAIT
Since 1964

701 N. Parkcenter Drive
Santa Ana, CA 92705
p: 714/560/8200 f: 714/560/8211
www.tait.com

Los Angeles Sacramento San Francisco Dallas Phoenix
Ontario San Diego Boise Denver Portland

6/2/23
DATE

JACOB VANDERVIS R.C.E. No. C46301

GEOTECHNICAL ENGINEER SEAL

PROJECT NUMBER: ME0381

ENGINEER / DESIGNER: TAIT

PROJECT MANAGER: DM

CHECKED BY: JV

DANA POINT HARBOR REVITALIZATION

Harbor Drive
Dana Point, CA 92629

**PRIVATE DOMESTIC WATER AND SEWER PLAN
WEST COVE PRIVATE UTILITY PLAN**

SCALE: SEE ON SHEET

DRAWN BY: TAIT

DATE: 6/2/2023

DRAWING: ME0381

SHEET NO.: 3

**County of Orange - OC Public Works
OC Development Services
APPROVED**

This set of plans and specifications must be kept on the job at all times. It is unlawful to make any changes or alterations to these plans without written permission from OC Public Works, OC Development Services of Orange County. The stamping of these plan specifications SHALL NOT be held to permit or be an approval of the violation of any provisions of any County Ordinance or State law.

CONSTRUCTION NOTES

- 1 PROTECT IN PLACE ITEM PER PLAN
- 2 CONTRACTOR TO REPLACE SURFACE IN KIND.
- 3 WHERE TRENCH ENCOUNTERS PCC, CONTRACTOR TO MATCH TO EXISTING PCC PAVEMENT, AT PCC SIDEWALK PER COUNTY OF ORANGE STD. PLAN 1205.
- 4 REMOVE AND REPLACE PCC STEPS IN KIND (5.5" RISERS).
- 5 REMOVE PULLBOX PER SEPARATE PLAN.

DOMESTIC WATER NOTES:

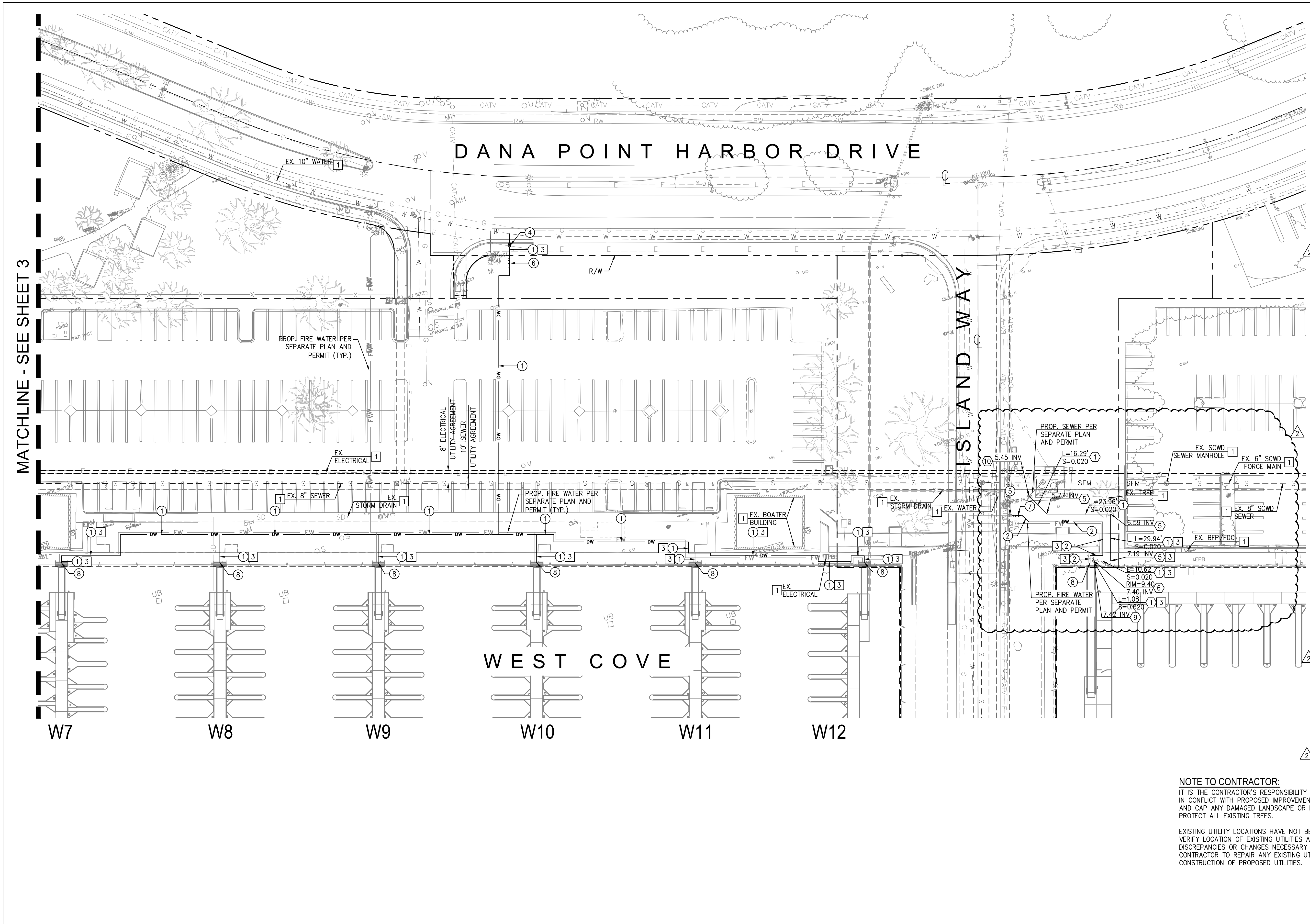
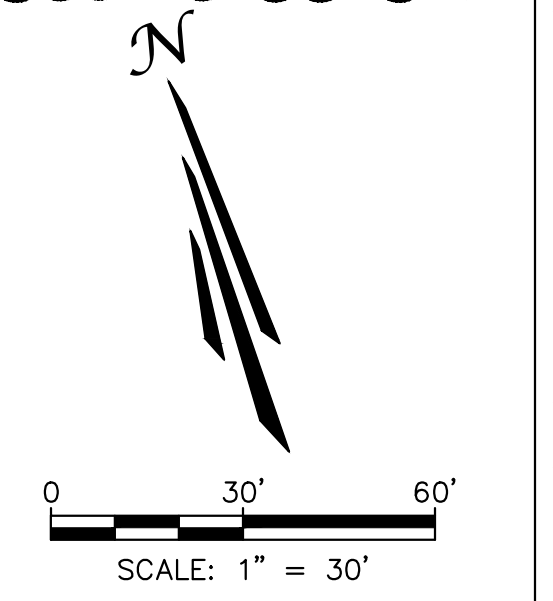
- 1 FURNISH AND INSTALL 2" PVC SCH 80 WATER LINE, FITTINGS AND BENDS. TRENCH AND BEDDING PER DETAIL ON SHEET 9 AND GEOTECHNICAL RECOMMENDATIONS. PRUNE TREE ROOTS AS NEEDED.
- 2 FURNISH AND INSTALL 3" PVC SCH 80 WATER LINE, FITTINGS AND BENDS. TRENCH AND BEDDING PER DETAIL ON SHEET 9 AND GEOTECHNICAL RECOMMENDATIONS. PRUNE TREE ROOTS AS NEEDED.
- 3 TRENCHING AND BEDDING TO BE MODIFIED PER DETAIL ON SHEET 9 AND GEOTECHNICAL RECOMMENDATIONS WHERE GROUNDWATER IS ENCOUNTERED.
- 4 2" WATER METER CONNECTION TO WATER MAIN PER SEPARATE SCWD PLAN AND PERMIT.
- 5 3" WATER METER CONNECTION TO WATER MAIN PER SEPARATE SCWD PLAN AND PERMIT.
- 6 INSTALL 2" BACKFLOW PREVENTER PER SCWD STD. DWG. W-14 ON SHEET 12.
- 7 INSTALL 3" BACKFLOW PREVENTER PER SCWD STD. DWG. W-15 ON SHEET 12.
- 8 INSTALL TEMPORARY CAP UNTIL CONNECTING TO WATER LINE AT GANGWAY. CONTRACTOR TO COORDINATE CONNECTION TIMING WITH BELLINGHAM MARINE. SEE MARINA UTILITY PLAN FOR WATER LINE VALVE INSTALLATION. SEE TYPICAL POC DETAIL ON SHEET 11.
- 9 CONNECT TO EXISTING WATER METER.

SEWER NOTES:

- 1 FURNISH AND INSTALL 4" PVC (SDR 35) SEWER LINE, FITTINGS AND BENDS. TRENCH AND BEDDING PER DETAIL ON SHEET 9 AND GEOTECHNICAL RECOMMENDATIONS. PRUNE TREE ROOTS AS NEEDED.
- 2 FURNISH AND INSTALL 6" PVC (SDR 35) SEWER LINE, FITTINGS AND BENDS. TRENCH AND BEDDING PER DETAIL ON SHEET 9 AND GEOTECHNICAL RECOMMENDATIONS. PRUNE TREE ROOTS AS NEEDED.
- 3 TRENCHING AND BEDDING TO BE MODIFIED PER DETAIL ON SHEET 9 AND GEOTECHNICAL RECOMMENDATIONS WHERE GROUNDWATER IS ENCOUNTERED.
- 4 CONSTRUCT SEWER MANHOLE PER SCWD STD. DWG. S-1 ON SHEET 13. ALL MANHOLES SHALL BE LINED USING LINER FROM APPROVED MATERIAL LIST AND COMPOSITE LIDS.
- 5 INSTALL 45° BEND OR 90° BEND PER PLAN.
- 6 INSTALL SEWER CLEANOUT PER SCWD STD. DWG. S-10 ON SHEET 14.
- 7 CONNECT 4" SEWER LATERAL TO EXISTING SEWER LINE PER SEPARATE SCWD PLAN AND PERMIT.
- 8 CONNECT 6" SEWER LATERAL TO EXISTING SEWER LINE PER SEPARATE SCWD PLAN AND PERMIT.
- 9 INSTALL TEMPORARY CAP UNTIL CONNECTING TO SEWER LINE AT GANGWAY. CONTRACTOR TO COORDINATE CONNECTION TIMING WITH BELLINGHAM MARINE. SEE TYPICAL POC DETAIL ON SHEET 11.
- 10 CONNECT 4" SEWER LATERAL TO SCWD SEWER CLEANOUT PER SEPARATE SCWD PLAN AND PERMIT.

NOTE TO CONTRACTOR:
IT IS THE CONTRACTOR'S RESPONSIBILITY TO REPAIR ANY UTILITIES THAT ARE IN CONFLICT WITH PROPOSED IMPROVEMENTS. CONTRACTOR TO REPAIR, CUT, AND CAP ANY DAMAGED LANDSCAPE OR IRRIGATION. CONTRACTOR TO PROTECT ALL EXISTING TREES.

EXISTING UTILITY LOCATIONS HAVE NOT BEEN VERIFIED. CONTRACTOR TO FIELD VERIFY LOCATION OF EXISTING UTILITIES AND INFORM ENGINEER OF ANY DISCREPANCIES OR CHANGES NECESSARY TO THE PROPOSED UTILITIES. CONTRACTOR TO REPAIR ANY EXISTING UTILITIES DAMAGED DURING CONSTRUCTION OF PROPOSED UTILITIES.



MATCHLINE - SEE SHEET 3

NO.	DATE	DESCRIPTION	BY
1	05/04/23	SEWER AND WATER LINE REVISIONS AND CONSTRUCTION NOTE UPDATES.	
REVISIONS			

PREPARED UNDER THE SUPERVISION OF:
TAIT
Since 1964
Los Angeles Sacramento San Francisco Dallas Phoenix
Ontario San Diego Boise Denver Portland

JACOB VANDERVIS R.C.E. No. C46301 DATE 5/5/23

GEOTECHNICAL ENGINEER SEAL

PROJECT NUMBER: ME0381

ENGINEER / DESIGNER: TAIT

PROJECT MANAGER: DM

CHECKED BY: JV

DANA POINT HARBOR REVITALIZATION

Harbor Drive
Dana Point, CA 92629

**PRIVATE DOMESTIC WATER AND SEWER PLAN
WEST COVE PRIVATE UTILITY PLAN**

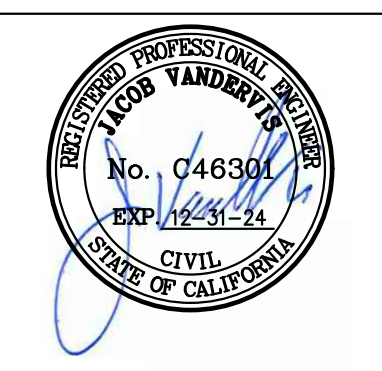
SCALE: SEE ON SHEET

DRAWN BY: TAIT

DATE: 5/5/2023

DRAWING: ME0381

SHEET NO.: 4



**County of Orange - OC Public Works
OC Development Services
APPROVED**

This set of plans and specifications must be kept on the job at all times. It is unlawful to make any changes or alterations to these plans without written permission from OC Public Works, OC Development Services of Orange County. The stamping of these plan specifications SHALL NOT be held to permit or be an approval of the violation of any provisions of any County Ordinance or State law.

DATE: 6/21/2023
DRAWN BY: JACOB VANDERVIS
OFFICIAL

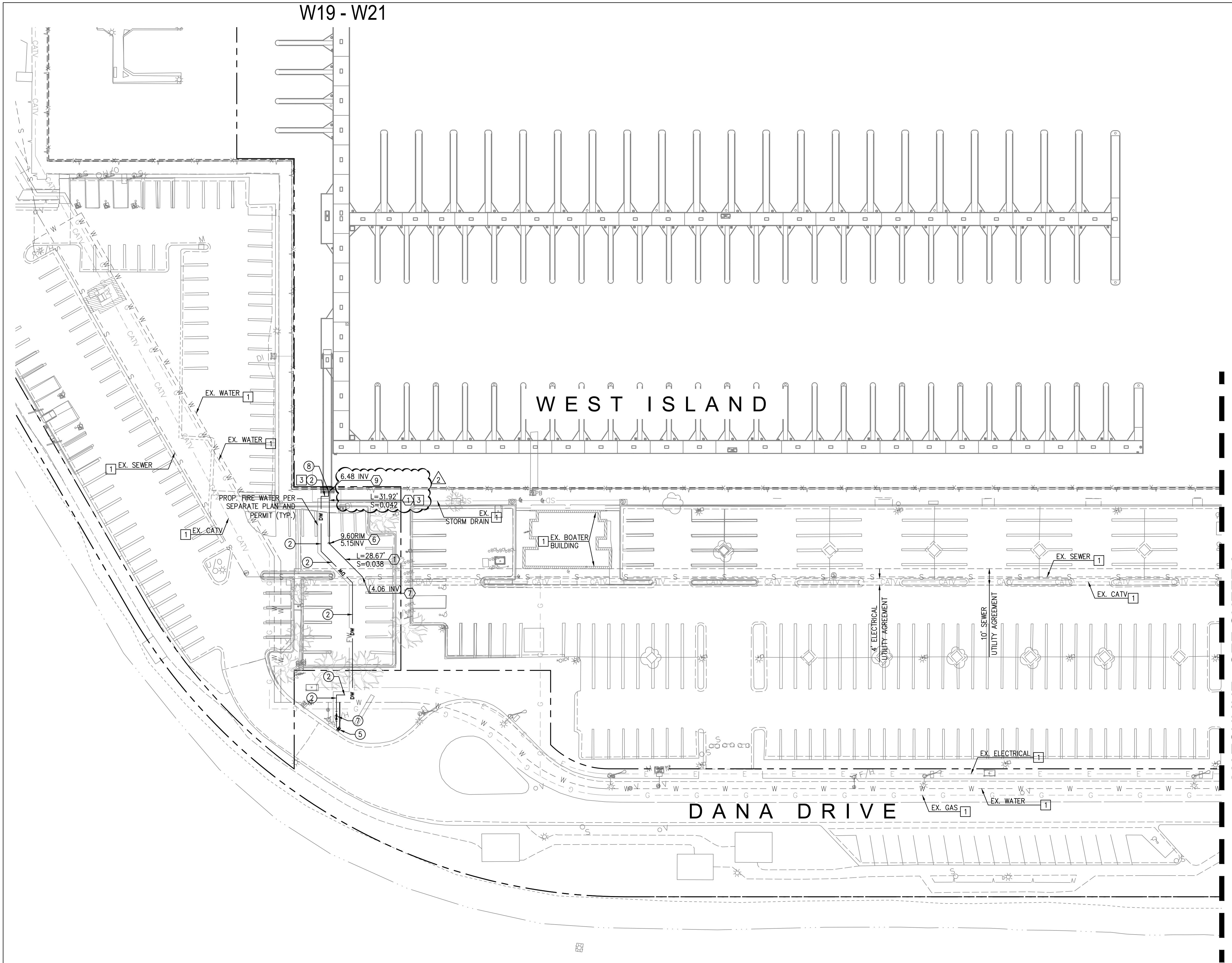
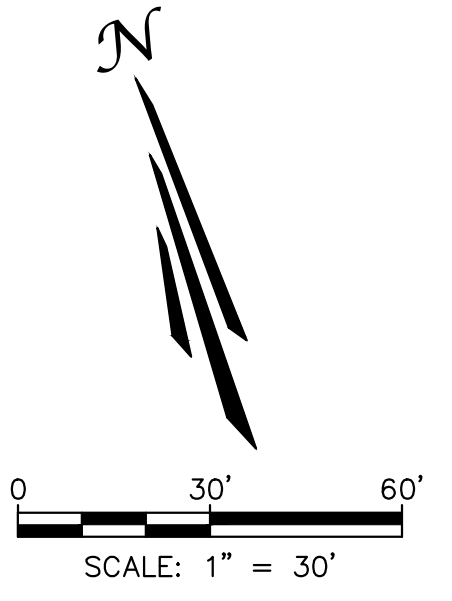
- CONSTRUCTION NOTES:**
- 1 PROTECT IN PLACE. ITEM PER PLAN.
 - 2 CONTRACTOR TO REPLACE SURFACE IN KIND.
 - 3 WHERE TRENCH ENCOUNTERS PCC, CONTRACTOR TO MATCH TO EXISTING PCC PAVEMENT, AT PCC SIDEWALK PER COUNTY OF ORANGE STD. PLAN 1205.
 - 4 REMOVE AND REPLACE PCC STEPS IN KIND (5.5" RISERS).
 - 5 REMOVE PULLBOX PER SEPARATE PLAN.

- DOMESTIC WATER NOTES:**
- 1 FURNISH AND INSTALL 2" PVC SCH 80 WATER LINE, FITTINGS AND BENDS. TRENCH AND BEDDING PER DETAIL ON SHEET 9 AND GEOTECHNICAL RECOMMENDATIONS. PRUNE TREE ROOTS AS NEEDED.
 - 2 FURNISH AND INSTALL 3" PVC SCH 80 WATER LINE, FITTINGS AND BENDS. TRENCH AND BEDDING PER DETAIL ON SHEET 9 AND GEOTECHNICAL RECOMMENDATIONS. PRUNE TREE ROOTS AS NEEDED.
 - 3 TRENCHING AND BEDDING TO BE MODIFIED PER DETAIL ON SHEET 9 AND GEOTECHNICAL RECOMMENDATIONS WHERE GROUNDWATER IS ENCOUNTERED.
 - 4 2" WATER METER CONNECTION TO WATER MAIN PER SEPARATE SCWD PLAN AND PERMIT.
 - 5 3" WATER METER CONNECTION TO WATER MAIN PER SEPARATE SCWD PLAN AND PERMIT.
 - 6 INSTALL 2" BACKFLOW PREVENTER PER SCWD STD. DWG. W-14 ON SHEET 12.
 - 7 INSTALL 3" BACKFLOW PREVENTER PER SCWD STD. DWG. W-15 ON SHEET 12.
 - 8 INSTALL TEMPORARY CAP UNTIL CONNECTING TO WATER LINE AT GANGWAY. CONTRACTOR TO COORDINATE CONNECTION TIMING WITH BELLINGHAM MARINE. SEE MARINA UTILITY PLAN FOR WATER LINE VALVE INSTALLATION. SEE TYPICAL POC DETAIL ON SHEET 11.

- SEWER NOTES:**
- 1 FURNISH AND INSTALL 4" PVC (SDR 35) SEWER LINE, FITTINGS AND BENDS. TRENCH AND BEDDING PER DETAIL ON SHEET 9 AND GEOTECHNICAL RECOMMENDATIONS. PRUNE TREE ROOTS AS NEEDED.
 - 2 FURNISH AND INSTALL 6" PVC (SDR 35) SEWER LINE, FITTINGS AND BENDS. TRENCH AND BEDDING PER DETAIL ON SHEET 9 AND GEOTECHNICAL RECOMMENDATIONS. PRUNE TREE ROOTS AS NEEDED.
 - 3 TRENCHING AND BEDDING TO BE MODIFIED PER DETAIL ON SHEET 9 AND GEOTECHNICAL RECOMMENDATIONS WHERE GROUNDWATER IS ENCOUNTERED.
 - 4 CONSTRUCT SEWER MANHOLE PER SCWD STD. DWG. S-1 ON SHEET 13. ALL MANHOLES SHALL BE LINED USING LINER FROM APPROVED MATERIAL LIST AND COMPOSITE LIDS.
 - 5 INSTALL 45° BEND OR 90° BEND PER PLAN.
 - 6 INSTALL SEWER CLEANOUT PER SCWD STD. DWG. S-10 ON SHEET 14.
 - 7 CONNECT 4" SEWER LATERAL TO EXISTING SEWER LINE PER SEPARATE SCWD PLAN AND PERMIT.
 - 8 CONNECT 6" SEWER LATERAL TO EXISTING SEWER LINE PER SEPARATE SCWD PLAN AND PERMIT.
 - 9 INSTALL TEMPORARY CAP UNTIL CONNECTING TO SEWER LINE AT GANGWAY. CONTRACTOR TO COORDINATE CONNECTION TIMING WITH BELLINGHAM MARINE. SEE TYPICAL POC DETAIL ON SHEET 11.

NOTE TO CONTRACTOR:
IT IS THE CONTRACTOR'S RESPONSIBILITY TO REPAIR ANY UTILITIES THAT ARE IN CONFLICT WITH PROPOSED IMPROVEMENTS. CONTRACTOR TO REPAIR, CUT, AND CAP ANY DAMAGED LANDSCAPE OR IRRIGATION. CONTRACTOR TO PROTECT ALL EXISTING TREES.

EXISTING UTILITY LOCATIONS HAVE NOT BEEN VERIFIED. CONTRACTOR TO FIELD VERIFY LOCATION OF EXISTING UTILITIES AND INFORM ENGINEER OF ANY DISCREPANCIES OR CHANGES NECESSARY TO THE PROPOSED UTILITIES. CONTRACTOR TO REPAIR ANY EXISTING UTILITIES DAMAGED DURING CONSTRUCTION OF PROPOSED UTILITIES.



MATCHLINE - SEE SHEET 6

NO.	DATE	DESCRIPTION	BY
1	05/04/23	SEWER LINE REVISIONS AND CONSTRUCTION NOTE UPDATES.	
REVISIONS			

PREPARED UNDER THE SUPERVISION OF:

TAIT
Since 1964

701 N. Parkcenter Drive
Santa Ana, CA 92705
p: 714/560/8200 f: 714/560/8211
www.tait.com

Los Angeles Sacramento San Francisco Dallas Phoenix
Ontario San Diego Boise Denver Portland

JACOB VANDERVIS R.C.E. No. C46301 DATE 5/5/23

GEOTECHNICAL ENGINEER SEAL

PROJECT NUMBER: ME0381

ENGINEER / DESIGNER: TAIT

PROJECT MANAGER: DM

CHECKED BY: JV

DANA POINT HARBOR REVITALIZATION

Harbor Drive
Dana Point, CA 92629

**PRIVATE DOMESTIC WATER AND SEWER PLAN
WEST ISLAND PRIVATE UTILITY PLAN**

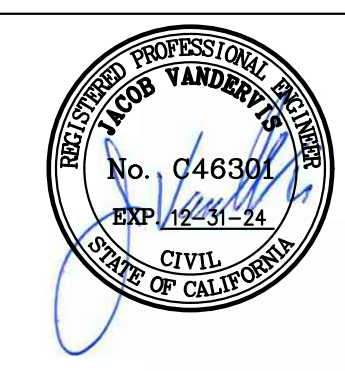
SCALE: SEE ON SHEET

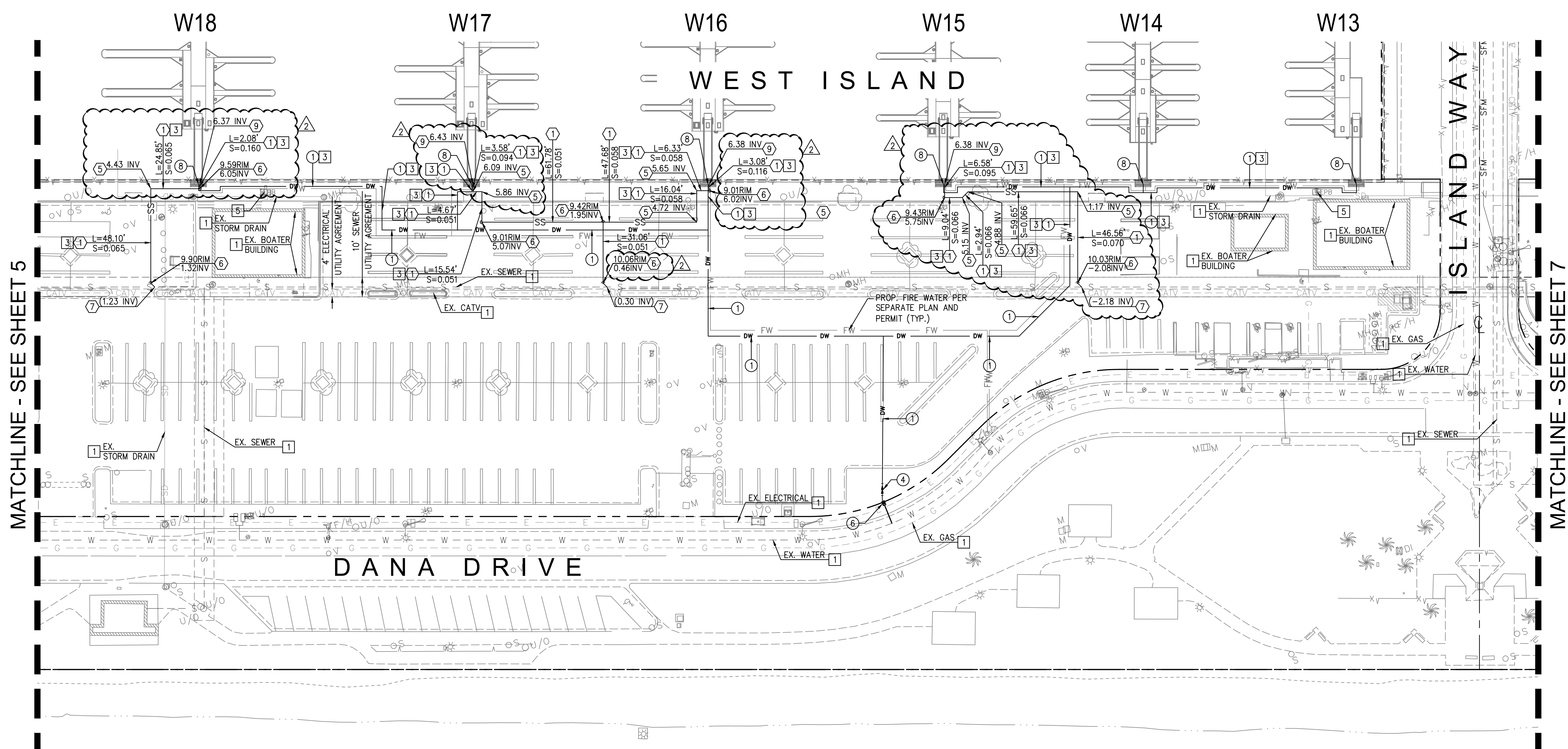
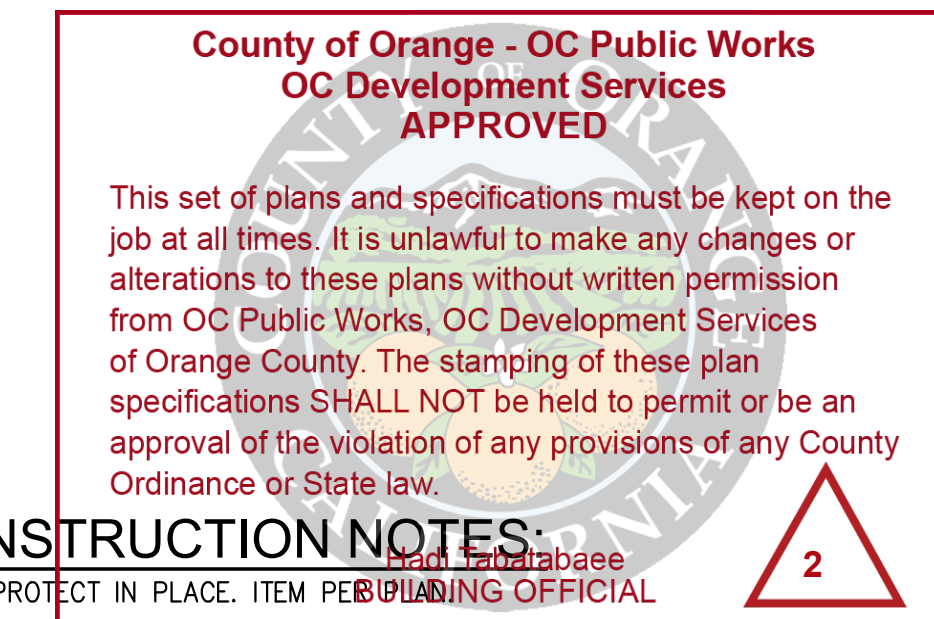
DRAWN BY: TAIT

DATE: 5/5/2023

DRAWING: ME0381

SHEET NO.: 5





MATCHLINE - SEE SHEET 5

MATCHLINE - SEE SHEET 7

CONSTRUCTION NOTES:

- 1 PROTECT IN PLACE. ITEM BEING REPLACED IN KIND.
- 2 CONTRACTOR TO REPLACE SURFACE IN KIND.
- 3 WHERE TRENCH ENCOUNTERS PCC, CONTRACTOR TO MATCH TO EXISTING PCC PAVEMENT, AT PCC SIDEWALK PER COUNTY OF ORANGE STD. PLAN 1205.
- 4 REMOVE AND REPLACE PCC STEPS IN KIND (5.5" RISERS).
- 5 REMOVE PULLBOX PER SEPARATE PLAN.

DOMESTIC WATER NOTES:

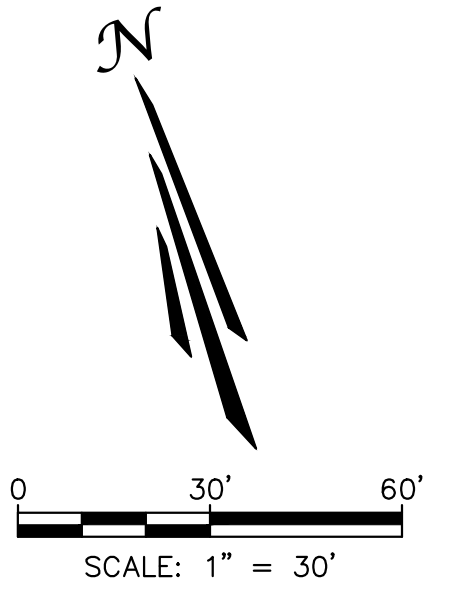
- 1 FURNISH AND INSTALL 2" PVC SCH 80 WATER LINE, FITTINGS AND BENDS. TRENCH AND BEDDING PER DETAIL ON SHEET 9 AND GEOTECHNICAL RECOMMENDATIONS. PRUNE TREE ROOTS AS NEEDED.
- 2 FURNISH AND INSTALL 3" PVC SCH 80 WATER LINE, FITTINGS AND BENDS. TRENCH AND BEDDING PER DETAIL ON SHEET 9 AND GEOTECHNICAL RECOMMENDATIONS. PRUNE TREE ROOTS AS NEEDED.
- 3 TRENCHING AND BEDDING TO BE MODIFIED PER DETAIL ON SHEET 9 AND GEOTECHNICAL RECOMMENDATIONS WHERE GROUNDWATER IS ENCOUNTERED.
- 4 2" WATER METER CONNECTION TO WATER MAIN PER SEPARATE SCWD PLAN AND PERMIT.
- 5 3" WATER METER CONNECTION TO WATER MAIN PER SEPARATE SCWD PLAN AND PERMIT.
- 6 INSTALL 2" BACKFLOW PREVENTER PER SCWD STD. DWG. W-14 ON SHEET 12.
- 7 INSTALL 3" BACKFLOW PREVENTER PER SCWD STD. DWG. W-15 ON SHEET 12.
- 8 INSTALL TEMPORARY CAP UNTIL CONNECTING TO WATER LINE AT GANGWAY. CONTRACTOR TO COORDINATE CONNECTION TIMING WITH BELLINGHAM MARINE. SEE MARINA UTILITY PLAN FOR WATER LINE VALVE INSTALLATION. SEE TYPICAL POC DETAIL ON SHEET 11.

SEWER NOTES:

- 1 FURNISH AND INSTALL 4" PVC (SDR 35) SEWER LINE, FITTINGS AND BENDS. TRENCH AND BEDDING PER DETAIL ON SHEET 9 AND GEOTECHNICAL RECOMMENDATIONS. PRUNE TREE ROOTS AS NEEDED.
- 2 FURNISH AND INSTALL 6" PVC (SDR 35) SEWER LINE, FITTINGS AND BENDS. TRENCH AND BEDDING PER DETAIL ON SHEET 9 AND GEOTECHNICAL RECOMMENDATIONS. PRUNE TREE ROOTS AS NEEDED.
- 3 TRENCHING AND BEDDING TO BE MODIFIED PER DETAIL ON SHEET 9 AND GEOTECHNICAL RECOMMENDATIONS WHERE GROUNDWATER IS ENCOUNTERED.
- 4 CONSTRUCT SEWER MANHOLE PER SCWD STD. DWG. S-1 ON SHEET 13. ALL MANHOLES SHALL BE LINED USING LINER FROM APPROVED MATERIAL LIST AND COMPOSITE LIDS.
- 5 INSTALL 45° BEND OR 90° BEND PER PLAN.
- 6 INSTALL SEWER CLEANOUT PER SCWD STD. DWG. S-10 ON SHEET 14.
- 7 CONNECT 4" SEWER LATERAL TO EXISTING SEWER LINE PER SEPARATE SCWD PLAN AND PERMIT.
- 8 CONNECT 6" SEWER LATERAL TO EXISTING SEWER LINE PER SEPARATE SCWD PLAN AND PERMIT.
- 9 INSTALL TEMPORARY CAP UNTIL CONNECTING TO SEWER LINE AT GANGWAY. CONTRACTOR TO COORDINATE CONNECTION TIMING WITH BELLINGHAM MARINE. SEE TYPICAL POC DETAIL ON SHEET 11.

NOTE TO CONTRACTOR:
IT IS THE CONTRACTOR'S RESPONSIBILITY TO REPAIR ANY UTILITIES THAT ARE IN CONFLICT WITH PROPOSED IMPROVEMENTS. CONTRACTOR TO REPAIR, CUT, AND CAP ANY DAMAGED LANDSCAPE OR IRRIGATION. CONTRACTOR TO PROTECT ALL EXISTING TREES.

EXISTING UTILITY LOCATIONS HAVE NOT BEEN VERIFIED. CONTRACTOR TO FIELD VERIFY LOCATION OF EXISTING UTILITIES AND INFORM ENGINEER OF ANY DISCREPANCIES OR CHANGES NECESSARY TO THE PROPOSED UTILITIES. CONTRACTOR TO REPAIR ANY EXISTING UTILITIES DAMAGED DURING CONSTRUCTION OF PROPOSED UTILITIES.



NO.	DATE	DESCRIPTION	BY
1	05/04/23	SEWER LINE REVISIONS AND CONSTRUCTION NOTE UPDATES.	
REVISIONS			

PREPARED UNDER THE SUPERVISION OF:

TAIT
Since 1964

701 N. Parkcenter Drive
Santa Ana, CA 92705
p: 714/560/8200 f: 714/560/8211
www.tait.com

Los Angeles Sacramento San Francisco Dallas Phoenix
Ontario San Diego Boise Denver Portland

JACOB VANDERVIS R.C.E. No. C46301 DATE 5/5/23

GEOTECHNICAL ENGINEER SEAL

PROJECT NUMBER: ME0381

ENGINEER / DESIGNER: TAIT

PROJECT MANAGER: DM

CHECKED BY: JV

DANA POINT HARBOR REVITALIZATION

Harbor Drive
Dana Point, CA 92629

**PRIVATE DOMESTIC WATER AND SEWER PLAN
WEST ISLAND PRIVATE UTILITY PLAN**

SCALE: SEE ON SHEET

DRAWN BY: TAIT

DATE: 5/5/2023

DRAWING: ME0381

SHEET NO.: 6

**County of Orange - OC Public Works
OC Development Services
APPROVED**

This set of plans and specifications must be kept on the job at all times. It is unlawful to make any changes or alterations to these plans without written permission from OC Public Works, OC Development Services of Orange County. The stamping of these plan specifications SHALL NOT be held to permit or be an approval of the violation of any provisions of any County Ordinance or State law.

BUILDING OFFICIAL 

CONSTRUCTION NOTES

- 1 PROTECT IN PLACE, ITEM PER PLAN.
- 2 CONTRACTOR TO REPLACE SURFACE IN KIND.
- 3 WHERE TRENCH ENCOUNTERS PCC, CONTRACTOR TO MATCH TO EXISTING PCC PAVEMENT, AT PCC SIDEWALK PER COUNTY OF ORANGE STD. PLAN 1205.
- 4 REMOVE AND REPLACE PCC STEPS IN KIND (5.5" RISERS).
- 5 REMOVE PULLBOX PER SEPARATE PLAN.

DOMESTIC WATER NOTES:

- 1 FURNISH AND INSTALL 2" PVC SCH 80 WATER LINE, FITTINGS AND BENDS. TRENCH AND BEDDING PER DETAIL ON SHEET 9 AND GEOTECHNICAL RECOMMENDATIONS. PRUNE TREE ROOTS AS NEEDED.
- 2 FURNISH AND INSTALL 3" PVC SCH 80 WATER LINE, FITTINGS AND BENDS. TRENCH AND BEDDING PER DETAIL ON SHEET 9 AND GEOTECHNICAL RECOMMENDATIONS. PRUNE TREE ROOTS AS NEEDED.
- 3 TRENCHING AND BEDDING TO BE MODIFIED PER DETAIL ON SHEET 9 AND GEOTECHNICAL RECOMMENDATIONS WHERE GROUNDWATER IS ENCOUNTERED.
- 4 2" WATER METER CONNECTION TO WATER MAIN PER SEPARATE SCWD PLAN AND PERMIT.
- 5 3" WATER METER CONNECTION TO WATER MAIN PER SEPARATE SCWD PLAN AND PERMIT.
- 6 INSTALL 2" BACKFLOW PREVENTER PER SCWD STD. DWG. W-14 ON SHEET 12.
- 7 INSTALL 3" BACKFLOW PREVENTER PER SCWD STD. DWG. W-15 ON SHEET 12.
- 8 INSTALL TEMPORARY CAP UNTIL CONNECTING TO WATER LINE AT GANGWAY. CONTRACTOR TO COORDINATE CONNECTION TIMING WITH BELLINGHAM MARINE. SEE MARINA UTILITY PLAN FOR WATER LINE VALVE INSTALLATION. SEE TYPICAL POC DETAIL ON SHEET 11.

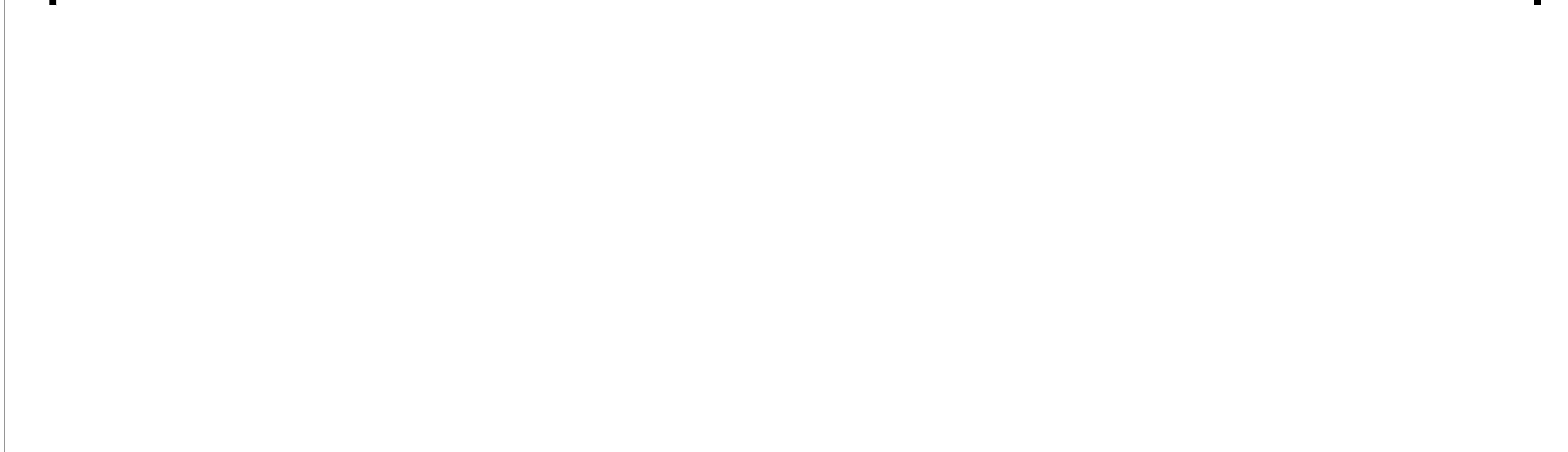
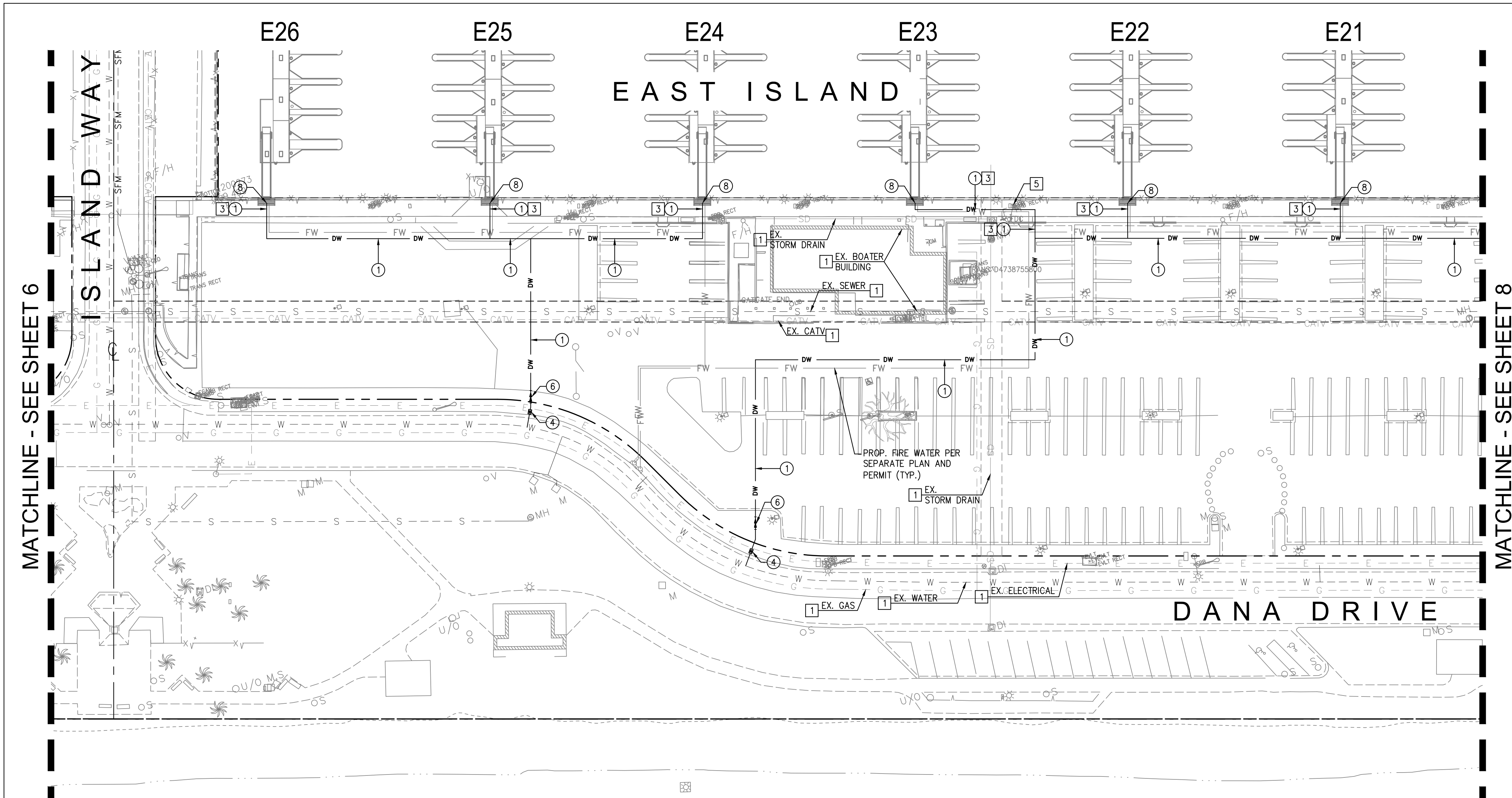
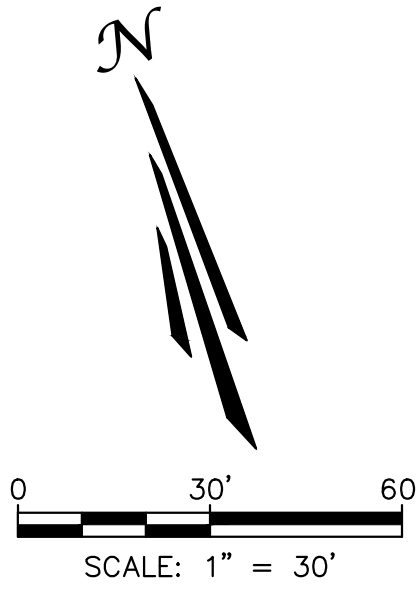
SEWER NOTES:

- 1 FURNISH AND INSTALL 4" PVC (SDR 35) SEWER LINE, FITTINGS AND BENDS. TRENCH AND BEDDING PER DETAIL ON SHEET 9 AND GEOTECHNICAL RECOMMENDATIONS. PRUNE TREE ROOTS AS NEEDED.
- 2 FURNISH AND INSTALL 6" PVC (SDR 35) SEWER LINE, FITTINGS AND BENDS. TRENCH AND BEDDING PER DETAIL ON SHEET 9 AND GEOTECHNICAL RECOMMENDATIONS. PRUNE TREE ROOTS AS NEEDED.
- 3 TRENCHING AND BEDDING TO BE MODIFIED PER DETAIL ON SHEET 9 AND GEOTECHNICAL RECOMMENDATIONS WHERE GROUNDWATER IS ENCOUNTERED.
- 4 CONSTRUCT SEWER MANHOLE PER SCWD STD. DWG. S-1 ON SHEET 13. ALL MANHOLES SHALL BE LINED USING LINER FROM APPROVED MATERIAL LIST AND COMPOSITE LIDS.
- 5 INSTALL 45° BEND OR 90° BEND PER PLAN.
- 6 INSTALL SEWER CLEANOUT PER SCWD STD. DWG. S-10 ON SHEET 14.
- 7 CONNECT 4" SEWER LATERAL TO EXISTING SEWER LINE PER SEPARATE SCWD PLAN AND PERMIT.
- 8 CONNECT 6" SEWER LATERAL TO EXISTING SEWER LINE PER SEPARATE SCWD PLAN AND PERMIT.
- 9 INSTALL TEMPORARY CAP UNTIL CONNECTING TO SEWER LINE AT GANGWAY. CONTRACTOR TO COORDINATE CONNECTION TIMING WITH BELLINGHAM MARINE. SEE TYPICAL POC DETAIL ON SHEET 11.

NOTE TO CONTRACTOR:

IT IS THE CONTRACTOR'S RESPONSIBILITY TO REPAIR ANY UTILITIES THAT ARE IN CONFLICT WITH PROPOSED IMPROVEMENTS. CONTRACTOR TO REPAIR, CUT, AND CAP ANY DAMAGED LANDSCAPE OR IRRIGATION. CONTRACTOR TO PROTECT ALL EXISTING TREES.

EXISTING UTILITY LOCATIONS HAVE NOT BEEN VERIFIED. CONTRACTOR TO FIELD VERIFY LOCATION OF EXISTING UTILITIES AND INFORM ENGINEER OF ANY DISCREPANCIES OR CHANGES NECESSARY TO THE PROPOSED UTILITIES. CONTRACTOR TO REPAIR ANY EXISTING UTILITIES DAMAGED DURING CONSTRUCTION OF PROPOSED UTILITIES.



NO.	DATE	DESCRIPTION	BY
1	05/04/23	CONSTRUCTION NOTE UPDATES.	
REVISIONS			

PREPARED UNDER THE SUPERVISION OF:

TAIT
Since 1964

701 N. Parkcenter Drive
Santa Ana, CA 92705
p: 714/560/8200 f: 714/560/8211
www.tait.com

Los Angeles Sacramento San Francisco Dallas Phoenix
Ontario San Diego Boise Denver Portland

JACOB VANDERVIS R.C.E. No. C46301 DATE 5/5/23

GEOTECHNICAL ENGINEER SEAL

PROJECT NUMBER: ME0381

ENGINEER / DESIGNER: TAIT

PROJECT MANAGER: DM

CHECKED BY: JV

DANA POINT HARBOR REVITALIZATION

Harbor Drive
Dana Point, CA 92629

**PRIVATE DOMESTIC WATER AND SEWER PLAN
EAST ISLAND PRIVATE UTILITY PLAN**

SCALE: SEE ON SHEET

DRAWN BY: TAIT

DATE: 5/5/2023

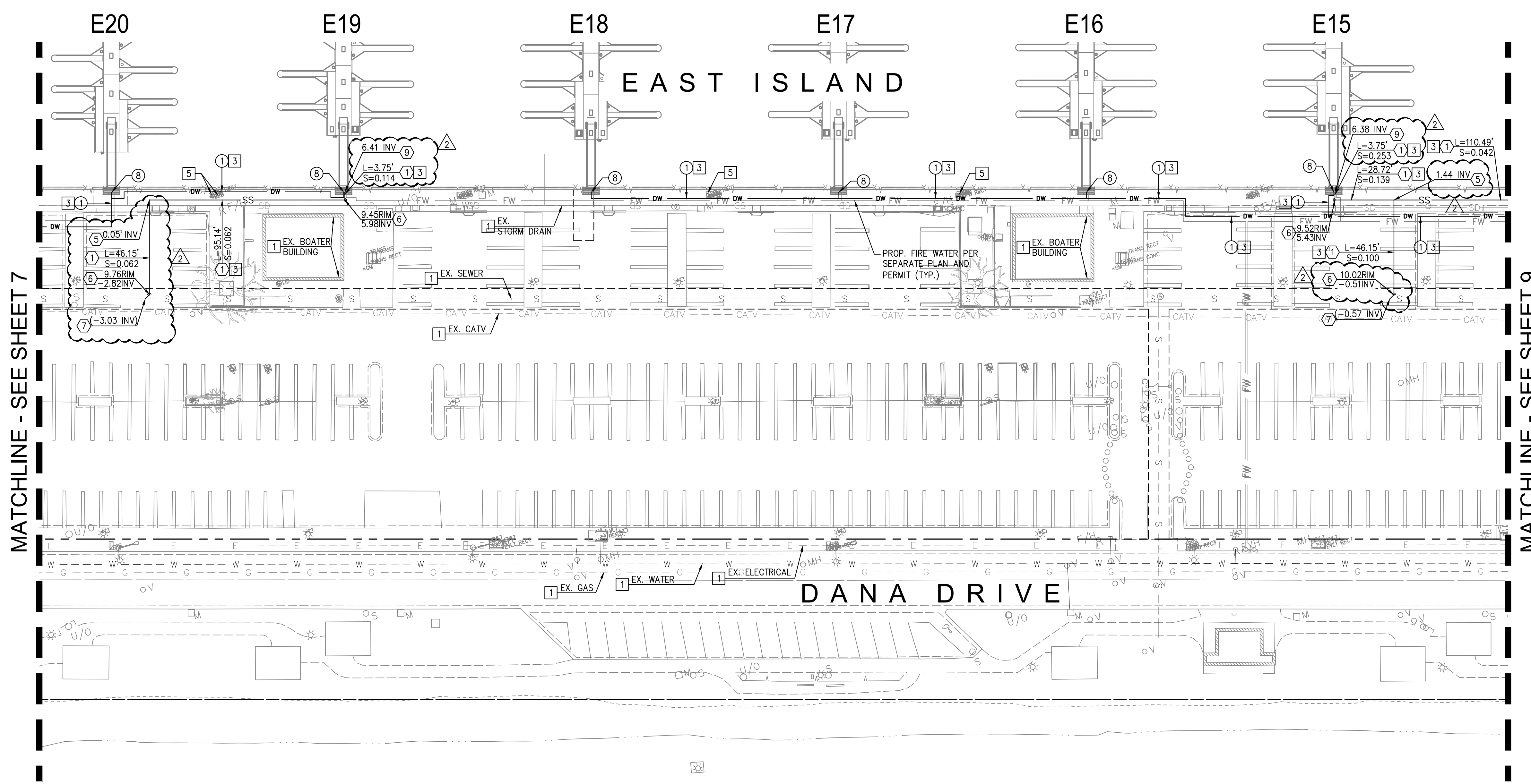
DRAWING: ME0381

SHEET NO.: 7

**County of Orange - OC Public Works
OC Development Services
APPROVED**

This set of plans and specifications must be kept on the job at all times. It is unlawful to make any changes or alterations to these plans without written permission from OC Public Works, OC Development Services of Orange County. The stamping of these plan specifications SHALL NOT be held to permit or be an approval of the violation of any provisions of any County Ordinance or State law.

BLANDING OFFICIAL
2



MATCHLINE - SEE SHEET 7

MATCHLINE - SEE SHEET 9

CONSTRUCTION NOTES:

- 1 PROTECT IN PLACE. ITEM PER PERMIT.
- 2 CONTRACTOR TO REPLACE SURFACE IN KIND.
- 3 WHERE TRENCH ENCOUNTERS PCC, CONTRACTOR TO MATCH TO EXISTING PCC PAVEMENT, AT PCC SIDEWALK PER COUNTY OF ORANGE STD. PLAN 1205.
- 4 REMOVE AND REPLACE PCC STEPS IN KIND (5.5" RISERS).
- 5 REMOVE PULLBOX PER SEPARATE PLAN.

DOMESTIC WATER NOTES:

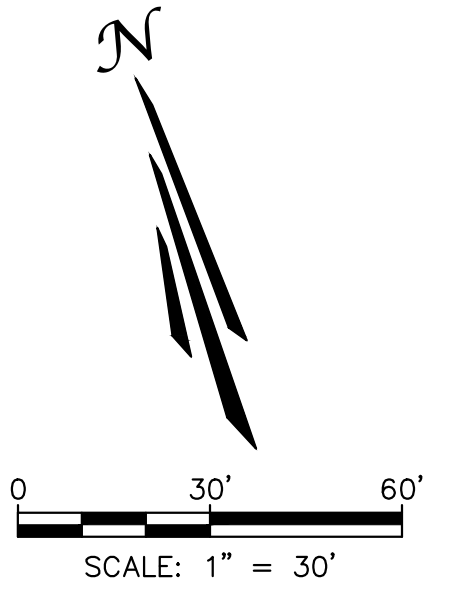
- 1 FURNISH AND INSTALL 2" PVC SCH 80 WATER LINE, FITTINGS AND BENDS. TRENCH AND BEDDING PER DETAIL ON SHEET 9 AND GEOTECHNICAL RECOMMENDATIONS. PRUNE TREE ROOTS AS NEEDED.
- 2 FURNISH AND INSTALL 3" PVC SCH 80 WATER LINE, FITTINGS AND BENDS. TRENCH AND BEDDING PER DETAIL ON SHEET 9 AND GEOTECHNICAL RECOMMENDATIONS. PRUNE TREE ROOTS AS NEEDED.
- 3 TRENCHING AND BEDDING TO BE MODIFIED PER DETAIL ON SHEET 9 AND GEOTECHNICAL RECOMMENDATIONS WHERE GROUNDWATER IS ENCOUNTERED.
- 4 2" WATER METER CONNECTION TO WATER MAIN PER SEPARATE SCWD PLAN AND PERMIT.
- 5 3" WATER METER CONNECTION TO WATER MAIN PER SEPARATE SCWD PLAN AND PERMIT.
- 6 INSTALL 2" BACKFLOW PREVENTER PER SCWD STD. DWG. W-14 ON SHEET 12.
- 7 INSTALL 3" BACKFLOW PREVENTER PER SCWD STD. DWG. W-15 ON SHEET 12.
- 8 INSTALL TEMPORARY CAP UNTIL CONNECTING TO WATER LINE AT GANGWAY. CONTRACTOR TO COORDINATE CONNECTION TIMING WITH BELLINGHAM MARINE. SEE MARINA UTILITY PLAN FOR WATER LINE VALVE INSTALLATION. SEE TYPICAL POC DETAIL ON SHEET 11.

SEWER NOTES:

- 1 FURNISH AND INSTALL 4" PVC (SDR 35) SEWER LINE, FITTINGS AND BENDS. TRENCH AND BEDDING PER DETAIL ON SHEET 9 AND GEOTECHNICAL RECOMMENDATIONS. PRUNE TREE ROOTS AS NEEDED.
- 2 FURNISH AND INSTALL 6" PVC (SDR 35) SEWER LINE, FITTINGS AND BENDS. TRENCH AND BEDDING PER DETAIL ON SHEET 9 AND GEOTECHNICAL RECOMMENDATIONS. PRUNE TREE ROOTS AS NEEDED.
- 3 TRENCHING AND BEDDING TO BE MODIFIED PER DETAIL ON SHEET 9 AND GEOTECHNICAL RECOMMENDATIONS WHERE GROUNDWATER IS ENCOUNTERED.
- 4 CONSTRUCT SEWER MANHOLE PER SCWD STD. DWG. S-1 ON SHEET 13. ALL MANHOLES SHALL BE LINED USING LINER FROM APPROVED MATERIAL LIST AND COMPOSITE LIDS.
- 5 INSTALL 45° BEND OR 90° BEND PER PLAN.
- 6 INSTALL SEWER CLEANOUT PER SCWD STD. DWG. S-10 ON SHEET 14.
- 7 CONNECT 4" SEWER LATERAL TO EXISTING SEWER LINE PER SEPARATE SCWD PLAN AND PERMIT.
- 8 CONNECT 6" SEWER LATERAL TO EXISTING SEWER LINE PER SEPARATE SCWD PLAN AND PERMIT.
- 9 INSTALL TEMPORARY CAP UNTIL CONNECTING TO SEWER LINE AT GANGWAY. CONTRACTOR TO COORDINATE CONNECTION TIMING WITH BELLINGHAM MARINE. SEE TYPICAL POC DETAIL ON SHEET 11.

NOTE TO CONTRACTOR:
IT IS THE CONTRACTOR'S RESPONSIBILITY TO REPAIR ANY UTILITIES THAT ARE IN CONFLICT WITH PROPOSED IMPROVEMENTS. CONTRACTOR TO REPAIR, CUT, AND CAP ANY DAMAGED LANDSCAPE OR IRRIGATION. CONTRACTOR TO PROTECT ALL EXISTING TREES.

EXISTING UTILITY LOCATIONS HAVE NOT BEEN VERIFIED. CONTRACTOR TO FIELD VERIFY LOCATION OF EXISTING UTILITIES AND INFORM ENGINEER OF ANY DISCREPANCIES OR CHANGES NECESSARY TO THE PROPOSED UTILITIES. CONTRACTOR TO REPAIR ANY EXISTING UTILITIES DAMAGED DURING CONSTRUCTION OF PROPOSED UTILITIES.



NO.	DATE	DESCRIPTION	BY
Δ	05/04/23	SEWER LINE REVISIONS AND CONSTRUCTION NOTE UPDATES.	
REVISIONS			

PREPARED UNDER THE SUPERVISION OF:

TAIT
Since 1964

701 N. Parkcenter Drive
Santa Ana, CA 92705
p: 714/560/8200 f: 714/560/8211
www.tait.com

Los Angeles Sacramento San Francisco Dallas Phoenix
Ontario San Diego Boise Denver Portland

JACOB VANDERVIS R.C.E. No. C46301 DATE 5/5/23

GEOTECHNICAL ENGINEER SEAL

PROJECT NUMBER: ME0381

ENGINEER / DESIGNER: TAIT

PROJECT MANAGER: DM

CHECKED BY: JV

DANA POINT HARBOR REVITALIZATION

Harbor Drive
Dana Point, CA 92629

**PRIVATE DOMESTIC WATER AND SEWER PLAN
EAST ISLAND PRIVATE UTILITY PLAN**

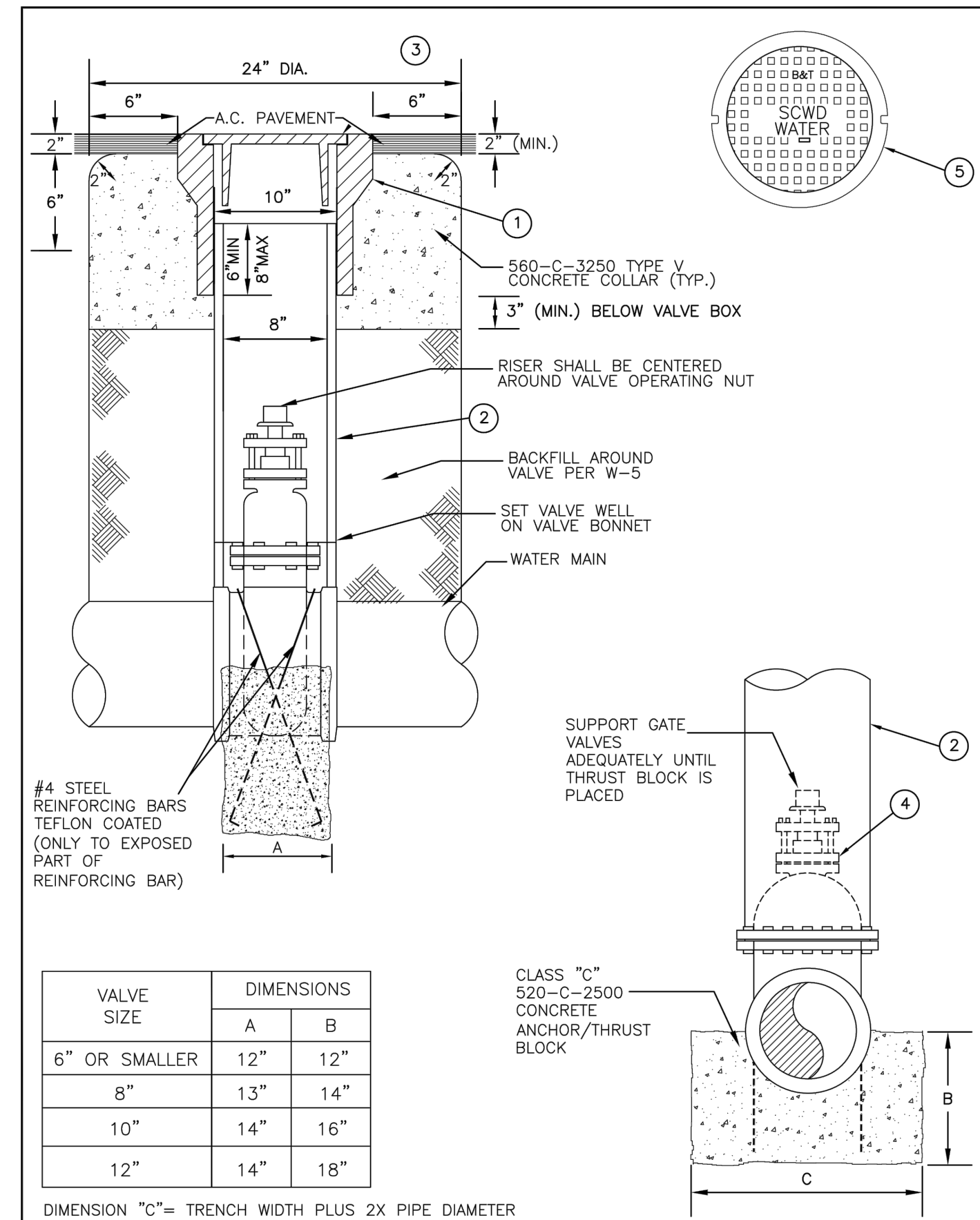
SCALE:	SEE ON SHEET
DRAWN BY:	TAIT
DATE:	5/5/2023
DRAWING:	ME0381
SHEET NO.:	8

**County of Orange - OC Public Works
OC Development Services
APPROVED**

This set of plans and specifications must be kept on the job at all times. It is unlawful to make any changes or alterations to these plans without written permission from OC Public Works, OC Development Services of Orange County. The stamping of these plan specifications SHALL NOT be held to permit or be an approval of the violation of any provisions of any County Ordinance or State law.

Hadi Tabatabaee
BUILDING OFFICIAL

2



VALVE SIZE	DIMENSIONS	
	A	B
6" OR SMALLER	12"	12"
8"	13"	14"
10"	14"	16"
12"	14"	18"

CLASS "C"
520-C-2500
CONCRETE
ANCHOR/THRUST
BLOCK

DIMENSION "C" = TRENCH WIDTH PLUS 2X PIPE DIAMETER

VALVE BOX ASSEMBLY
SOUTH COAST WATER DISTRICT

REVISION	BY	DATE	APPROVED	DATE	STD. NO.
ORIGINAL			CHIEF ENGINEER		W-6
UPDATE		2014	CHIEF ENGINEER		
UPDATE	TK	2022	DIRECTOR OF OPERATIONS		SHEET 1 OF 3

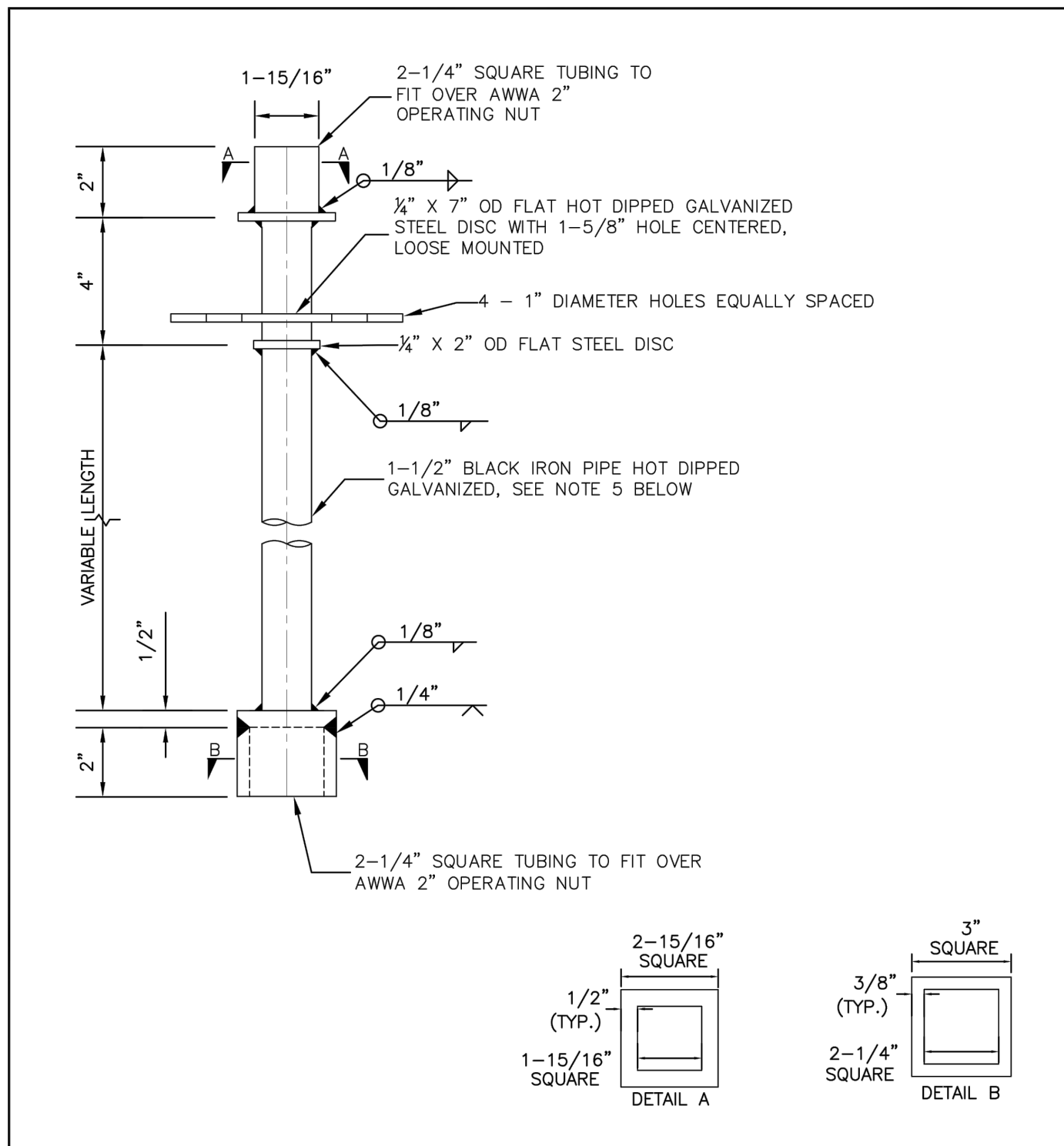
- NOTES:**
1. PROVIDE VALVE STEM EXTENSION. IF DEPTH TO VALVE NUT EXCEEDS 4 FEET FROM FINISHED GRADE, SEE SHEET 3.
 2. FOR VALVE INSTALLATIONS IN NEW TRACTS UNDER CONSTRUCTION, CONTRACTOR SHALL EXTEND VALVE WELL 2 FEET ABOVE INTERIM GRADE, AS DIRECTED BY SCWD INSPECTOR, UNTIL FINISH GRADE IS ESTABLISHED.
 3. THE WORDS "SCWD WATER" ON VALVE LID SHALL BE INSTALLED PARALLEL TO THE MAIN.
 4. VALVES BOLTED TO FITTINGS SHALL NOT REQUIRE ANCHOR/THRUST BLOCKS.
 5. COAT ALL FITTINGS, VALVES, AND HARDWARE WITH NON-OXIDIZING GREASE AND WRAP WITH 8 MIL POLYWRAP WITH V-BIOCIDE PRIOR TO INSTALLING REBAR.

LIST OF MATERIALS

ITEM	DESCRIPTION	MANUFACTURER	MODEL
1	10" HEAVY VALVE BOX, MARK V, RIM CLASS 35, NO FLG	BINGHAM AND TAYLOR	CUL10RHYY
2	8" VALVE WELL SDR-35 PVC PIPE	VINYL TECH, N.A.P.C.O., NORTHERN PIPE PRODUCTS, OR APPROVED EQUAL	
3	10" HEAVY LID WITH 4" SKIRT, MARK V, WATER RIM CLASS 35	BINGHAM AND TAYLOR	CUL10UHY4SCWDW
4	RESILIENT WEDGE GATE VALVE	MUELLER	2362 SERIES

VALVE BOX ASSEMBLY
SOUTH COAST WATER DISTRICT

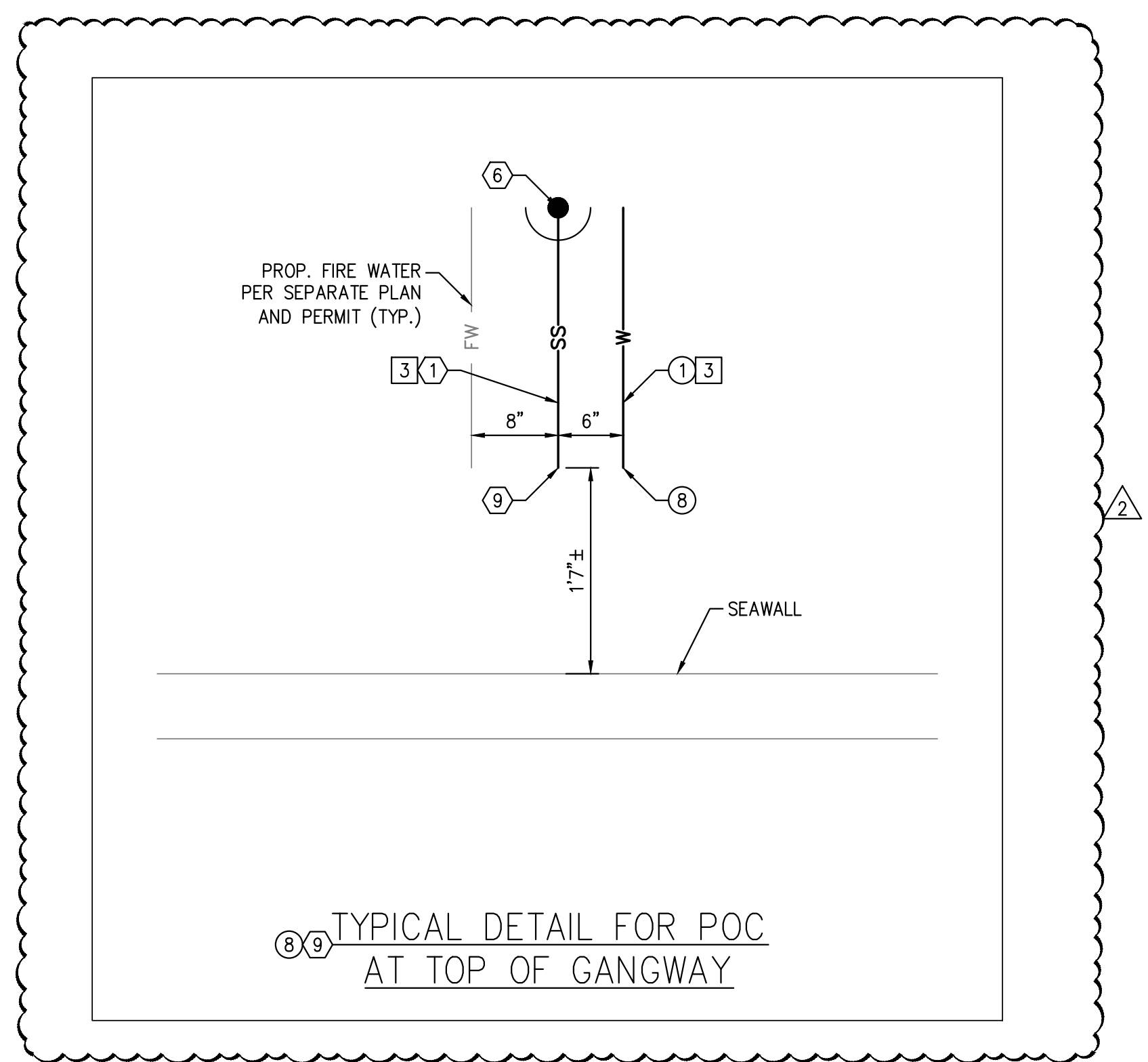
REVISION	BY	DATE	APPROVED	DATE	STD. NO.
ORIGINAL			CHIEF ENGINEER		W-6
UPDATE		2014	CHIEF ENGINEER		
UPDATE	TK	2022	DIRECTOR OF OPERATIONS		SHEET 2 OF 3



- NOTES:**
1. FABRICATE EXTENSION TO FIELD MEASUREMENT - SEE NOTE 2.
 2. NO VALVE STEM EXTENSION SHALL BE LESS THAN 2 FEET IN LENGTH. TERMINATE EXTENSION 24" FROM FINISHED GRADE.
 3. PROVIDE ADDITIONAL SPACER PLATE WHEN DISTANCE TO BOTTOM SOCKET EXCEEDS 5 FEET.
 4. EXTENSION STEM SHALL NOT BE ATTACHED/BOLTED TO OPERATING NUT OF THE VALVE.
 5. EXTENSION STEMS SHALL BE ROUND OR SQUARE STEEL BAR STOCK OF SOLID DESIGN (NO PINNED COUPLINGS, HOLLOW TUBE, OR PIPE PERMITTED).
 6. VALVES DEEPER THAN 4 FEET REQUIRE A VALVE STEM EXTENSION.

VALVE EXTENSION STEM
SOUTH COAST WATER DISTRICT

REVISION	BY	DATE	APPROVED	DATE	STD. NO.
ORIGINAL			CHIEF ENGINEER		W-6
UPDATE		2014	CHIEF ENGINEER		
UPDATE	TK	2022	DIRECTOR OF OPERATIONS		SHEET 3 OF 3



TYPICAL DETAIL FOR POC
AT TOP OF GANGWAY

NO.	DATE	DESCRIPTION	BY
2	05/04/23	ADDED TYPICAL DETAIL FOR POC AT TOP OF GANGWAY.	
REVISIONS			

PREPARED UNDER THE SUPERVISION OF:

TAIT
Since 1964

701 N. Parkcenter Drive
Santa Ana, CA 92705
p: 714/560/8200 f: 714/560/8211
www.tait.com

Los Angeles Ontario Sacramento San Diego San Francisco Boise Phoenix Denver Portland

JACOB VANDERVIS R.C.E. No. C46301 DATE 5/5/23

GEOTECHNICAL ENGINEER SEAL

PROJECT NUMBER: ME0381

ENGINEER / DESIGNER: TAIT

PROJECT MANAGER: DM

CHECKED BY: JV

DANA POINT HARBOR REVITALIZATION

Harbor Drive
Dana Point, CA 92629

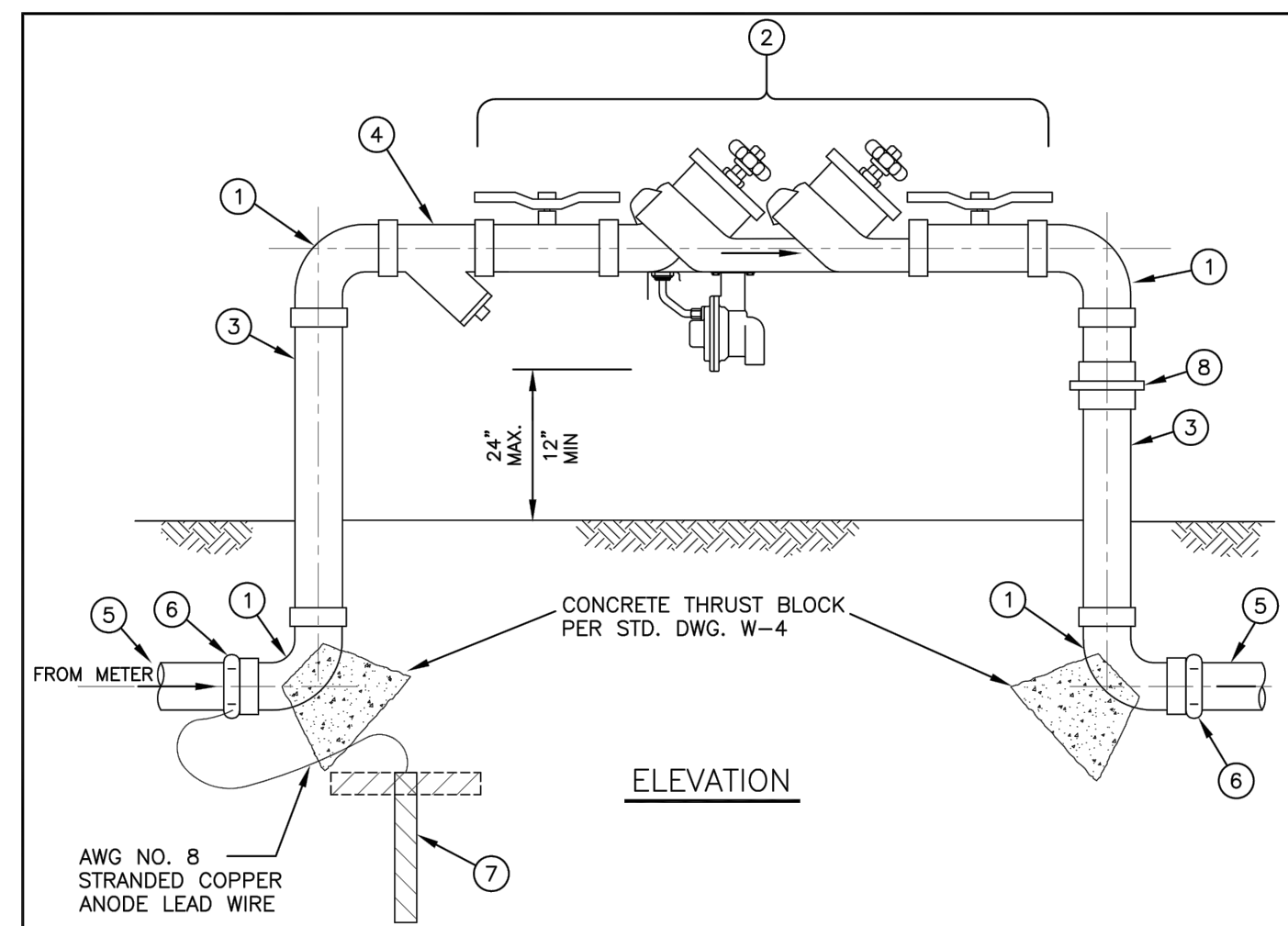
PRIVATE DOMESTIC WATER AND SEWER PLAN
WATER DETAILS

SCALE:	SEE ON SHEET
DRAWN BY:	TAIT
DATE:	5/5/2023
DRAWING:	ME0381
SHEET NO.:	11

County of Orange - OC Public Works
OC Development Services
APPROVED

This set of plans and specifications must be kept on the job at all times. It is unlawful to make any changes or alterations to these plans without written permission from OC Public Works, OC Development Services of Orange County. The stamping of these plan specifications SHALL NOT be held to permit or be an approval of the violation of any provisions of any County Ordinance or State law.

Hadi Tabatabaee
BUILDING OFFICIAL

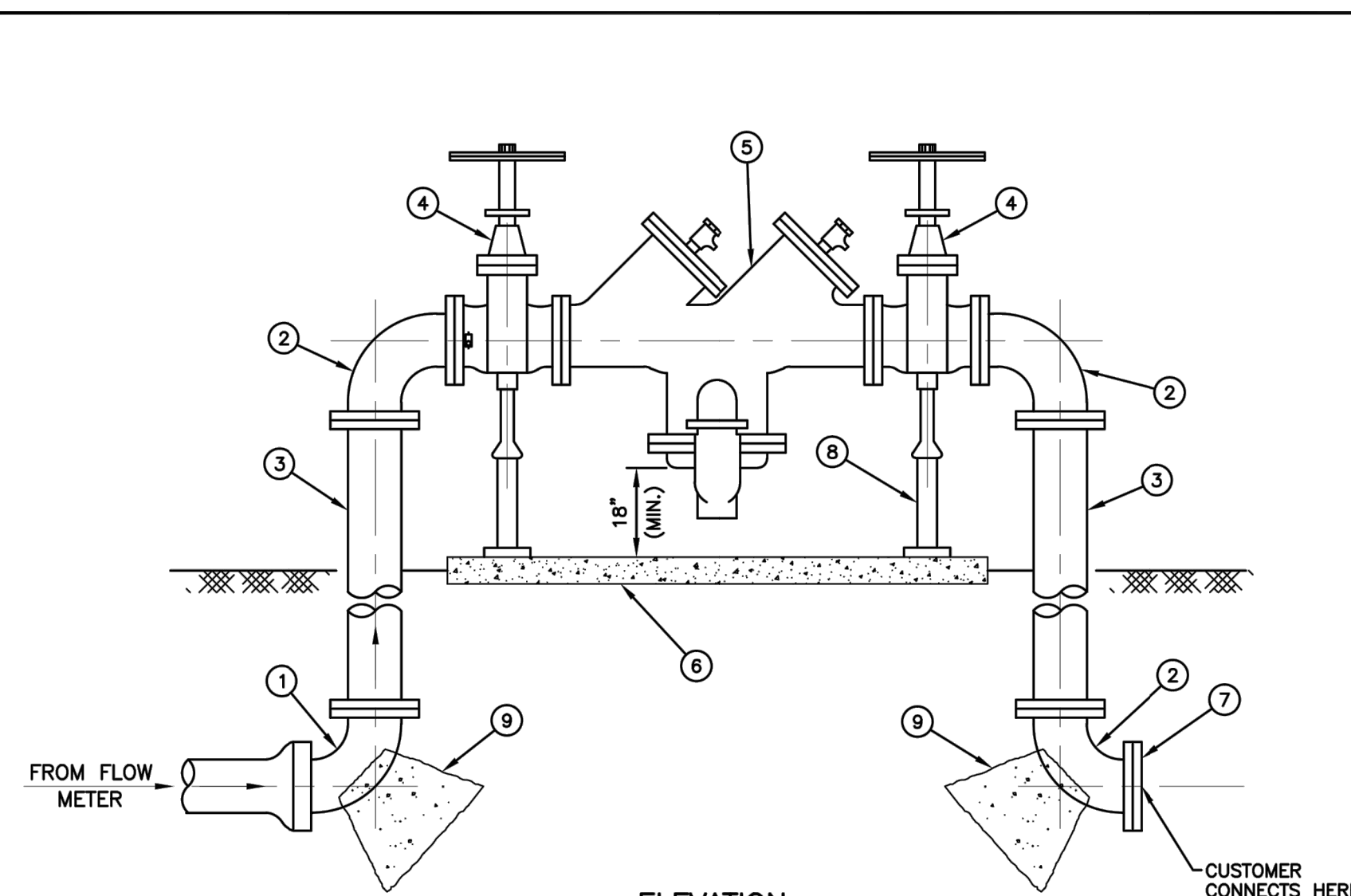


- NOTES:**
1. NOTIFY DISTRICT PRIOR TO INSTALLATION OF UNIT.
 2. INSTALLATION SHALL COMPLY WITH THE LATEST PLUMBING CODES AND APPLICABLE LOCAL AGENCY REQUIREMENTS. THE DEVICE SHALL BE LEAD FREE FOR DOMESTIC SERVICE.
 3. UPON COMPLETION OF THE INSTALLATION OF THE DEVICE, A TEST SHALL BE PERFORMED AND A CERTIFICATE OF ADEQUACY AND OPERATIONAL COMPLIANCE SHALL BE FURNISHED TO SCWD. THE TEST SHALL BE PERFORMED BY A TESTING AGENCY CERTIFIED BY THE ORANGE COUNTY ENVIRONMENTAL HEALTH AGENCY.
 4. PLACE ANODE AT LEAST 2" FROM COPPER TUBING.
 5. DEVICE SHALL NOT BE LOCATED WITHIN THE PUBLIC RIGHT OF WAY, BUT SHALL BE SET BACK AT LEAST 1 FOOT BEHIND RIGHT OF WAY ON PRIVATE PROPERTY.
 6. NO CONNECTIONS ALLOWED BETWEEN THE METER AND THE DEVICE.

LIST OF MATERIALS			
ITEM	DESCRIPTION	MANUFACTURER	MODEL
1	FNTP X FNTP BRASS 90° ELL		
2	USC HYDRAULIC INSTITUTE APPROVED/LISTED BACKFLOW PREVENTION ASSEMBLY		
3	THREADED BRASS NIPPLE		
4	WYE STRAINER, BRONZE		
5	TYPE K COPPER TUBING	MUELLER STREAMLINE CERRO FLOW PRODUCTS	ASTM-B88
6	HARD COPPER WITH MALE ADAPTOR		
7	ZINC ANODE AND LEAD WIRE	NORTHTOWN	NO 8 STRANDED WIRE
8	BRASS UNION		

REDUCED PRESSURE PRINCIPLE BACKFLOW PREVENTION ASSEMBLY; SIZES 3/4" THROUGH 2 1/2"

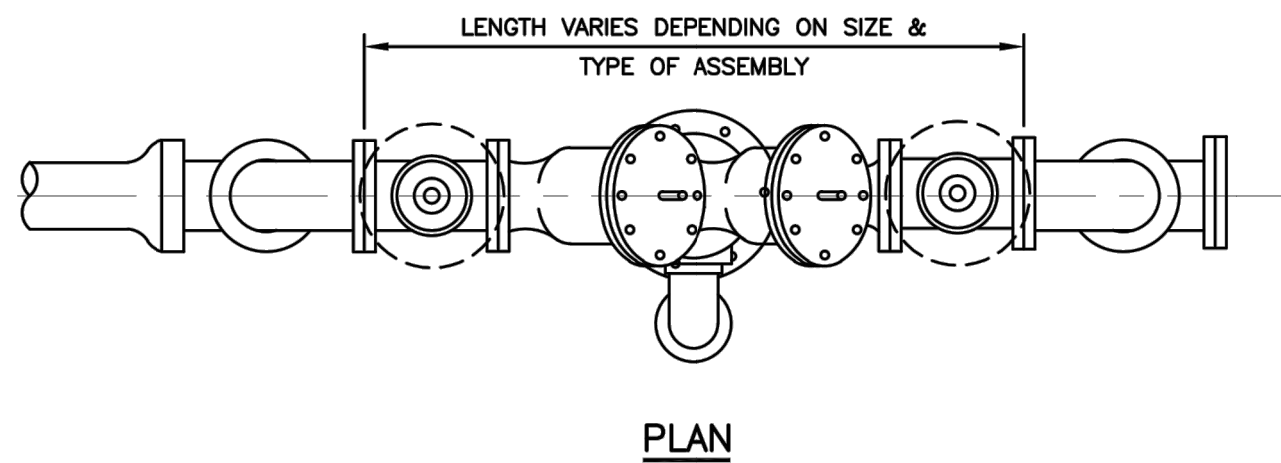
REVISION	BY	DATE	APPROVED	DATE	STANDARD NO.
ORIGINAL			CHIEF ENGINEER		W-14
UPDATE	TK	2014	APPROVED		
UPDATE		2020	DIRECTOR OF OPERATIONS		



MATERIALS

1	FLG x PO D.I.P. 90° ELL	33 11 11
2	FLG x FLG D.I.P. 90° ELL	33 11 11
3	FLG x FLG D.I.P. SPOOL	33 11 11
4	FLG x FLG OS&Y RISING STEM RW GATE VALVE	33 12 12
5	USC-LISTED REDUCED-PRESSURE (RP) BACKFLOW PREVENTION ASSEMBLY	33 12 09
6	CLASS B (520-A-2500) CONCRETE PAD WITH WIRE-MESH REINFORCEMENT	03 30 00
7	D.I.P. BLIND FLG	33 11 11
8	ADJUSTABLE PIPE SUPPORT SEE STD. DWG. W-19	33 05 38
9	CONCRETE THRUST BLOCK PER STD. DWG. W-4	03 30 00

- NOTES:**
1. REQUIRED ON ALL IRRIGATION SERVICES USING POTABLE WATER.
 2. NOTIFY DISTRICT PRIOR TO INSTALLATION OF UNIT.
 3. INSTALLATION SHALL COMPLY WITH THE LATEST PLUMBING CODE AND APPLICABLE LOCAL AGENCY REQUIREMENTS.
 4. UPON COMPLETION OF THE INSTALLATION OF THE DEVICE, A TEST SHALL BE PERFORMED AND A CERTIFICATE OF THE ADEQUACY AND OPERATIONAL COMPLIANCE SHALL BE FURNISHED TO SCWD. THE TEST SHALL BE PERFORMED BY A TESTING AGENCY CERTIFIED BY THE ORANGE COUNTY HEALTH DEPARTMENT.



SOUTH COAST WATER DISTRICT STANDARD DRAWING			
2014	REDUCED PRESSURE BACKFLOW PREVENTION ASSEMBLY; SIZES 3" AND LARGER	W-15	SHEET 1 OF 1

K:\24871\0001\CAD\Std Dwg\W-15.dwg

NO.	DATE	DESCRIPTION	BY
REVISIONS			

PREPARED UNDER THE SUPERVISION OF:

TAIT
Since 1964

701 N. Parkcenter Drive
Santa Ana, CA 92705
p: 714/560/8200 f: 714/560/8211
www.tait.com

Los Angeles Ontario Sacramento San Diego San Francisco Boise Dallas Denver Phoenix Portland

JACOB VANDERVIS R.C.E. No. C46301 DATE 5/5/23

GEOTECHNICAL ENGINEER SEAL

PROJECT NUMBER: ME0381

ENGINEER / DESIGNER: TAIT

PROJECT MANAGER: DM

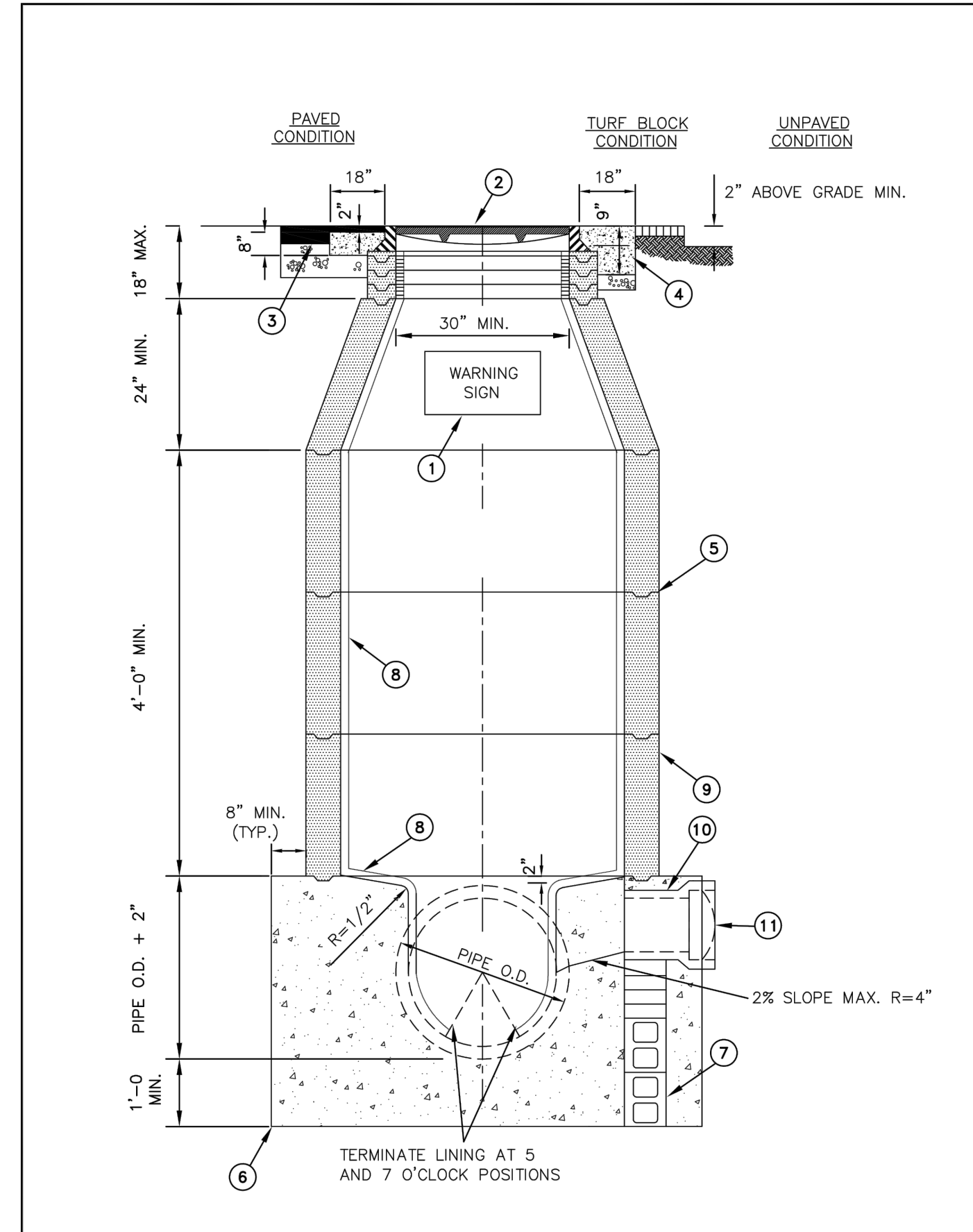
CHECKED BY: JV

DANA POINT HARBOR REVITALIZATION

Harbor Drive
Dana Point, CA 92629

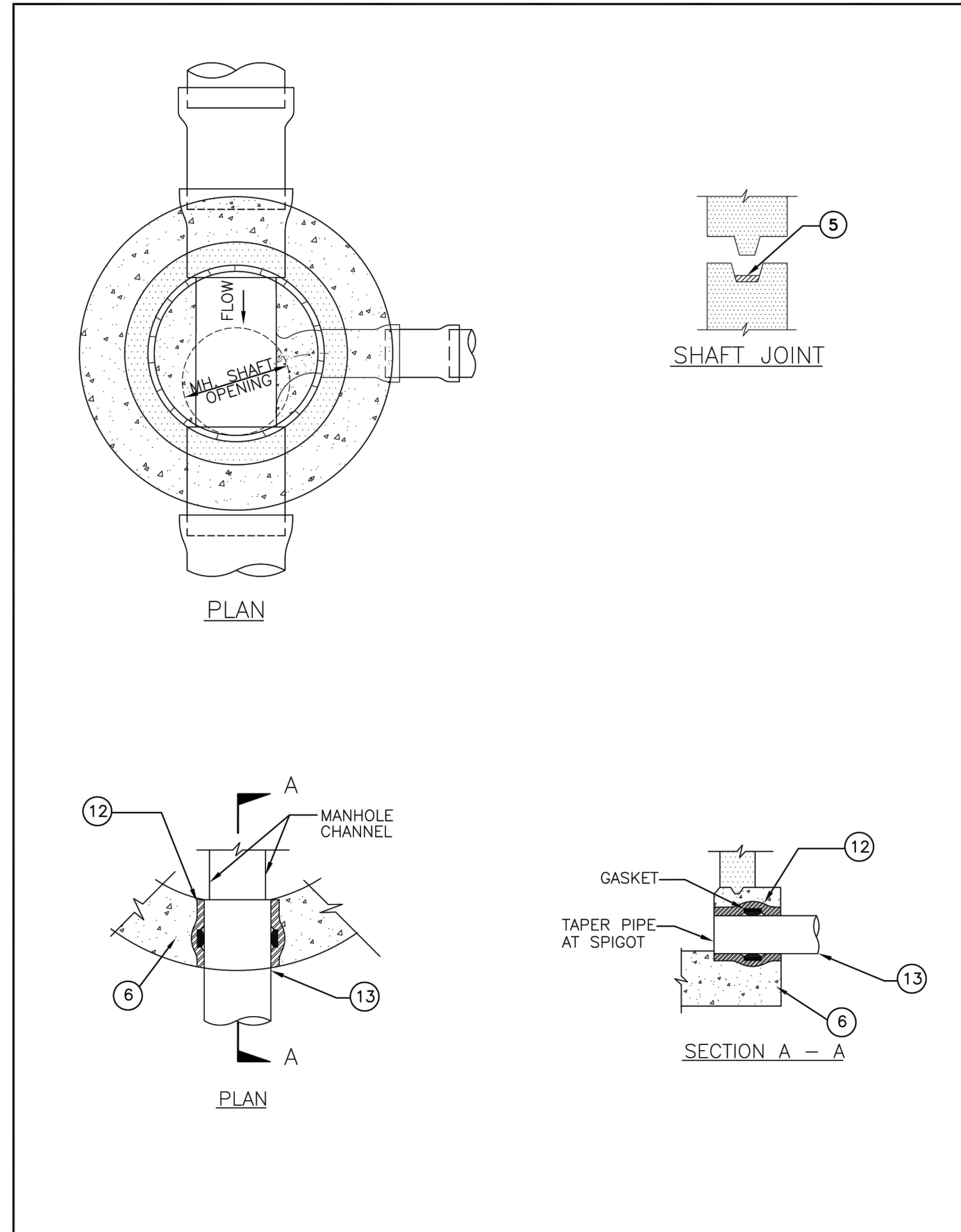
PRIVATE DOMESTIC WATER AND SEWER PLAN
WATER DETAILS

SCALE:	SEE ON SHEET
DRAWN BY:	TAIT
DATE:	5/5/2023
DRAWING:	ME0381
SHEET NO.:	12



REVISION		BY	DATE	SOUTH COAST WATER DISTRICT		STD. NO.
ORIGINAL			2014	APPROVED		S-1
UPDATE	TK		2020	CHIEF ENGINEER	DATE	
UPDATE				DIRECTOR OF OPERATIONS	DATE	

SHEET 1 OF 3



REVISION		BY	DATE	SOUTH COAST WATER DISTRICT		STD. NO.
ORIGINAL			2014	APPROVED		S-1
UPDATE	TK		2020	CHIEF ENGINEER	DATE	
UPDATE				DIRECTOR OF OPERATIONS	DATE	

SHEET 2 OF 3

- NOTES:**
- PLACE TWO HALF MOON SHAPED PLYWOOD COVERS (3/4\"/>

LIST OF MATERIALS			
ITEM	DESCRIPTION	MANUFACTURER	MODEL
1	STENCILED WARNING SIGN WITH WHITE BACKING. SEE SCWD STD. DWG. S-3		
2	36\"/>	ALHAMBRA FOUNDRY	A-1251
3	ROUND CLASS \"B\" CONCRETE COLLAR AND AC PAVEMENT	SOUTH BAY FOUNDRY	SBF 1251-6
4	SQUARE CLASS \"B\" CONCRETE PAD REINFORCED WITH 6\"/>		
5	SHAFT JOINT WITH JOINT SEALING COMPOUND. SEE NOTE 6.		
6	CAST IN PLACE CONCRETE MANHOLE BASE. SEE NOTES 6 AND 8.		
7	CONCRETE BLOCK AND/OR BRICK SUPPORT. SEE NOTE 2.		
8	MANHOLE LINER (WHERE REQUIRED). APPLY NON-SKID SURFACE ON TOTAL SHELF AREA.		
9	PRECAST CONCRETE MANHOLE SHAFT, MIN. WALL THICKNESS: 48\"/>	AMERON, B&W PRECAST, MAR-CON PRODUCTS, SOUTHWEST CONCRETE PRODUCTS, UNDERGROUND PRECAST SOLUTIONS, UTILITY VAULT, VERTICAL CONCRETE OLD CASTLE PRECAST	
10	16\"/>		
11	TEMPORARY PLUG		
12	FOR SDR-35 PVC PIPE: GASKETED SDR-35 (SDR 26 FOR 15\"/>		
13	C900 PVC DR 14	CERTAINTEE CORPORATION, DIAMOND PLASTICS, NORTH AMERICAN SPECIALTY PRODUCTS, PACIFIC WESTERN PIPE, VINYLTECH IPEX, NORTH AMERICAN DIAMOND PLASTICS, NORTH AMERICAN SPECIALTY PRODUCTS, PACIFIC WESTERN PIPE, VINYLTECH	

REVISION		BY	DATE	SOUTH COAST WATER DISTRICT		STD. NO.
ORIGINAL			2014	APPROVED		S-1
UPDATE	TK		2020	CHIEF ENGINEER	DATE	
UPDATE				DIRECTOR OF OPERATIONS	DATE	

SHEET 3 OF 3

Building&Safety: Roshanak Amirazizi 6/21/2023

Revision: 2
Permits: PLB22-0127-R2

**County of Orange - OC Public Works
OC Development Services
APPROVED**

This set of plans and specifications must be kept on the job at all times. It is unlawful to make any changes or alterations to these plans without written permission from OC Public Works, OC Development Services of Orange County. The stamping of these plan specifications SHALL NOT be held to permit or be an approval of the violation of any provisions of any County Ordinance or State law.

Hadi Tabatabaee
BUILDING OFFICIAL

2

NO.	DATE	DESCRIPTION	BY
REVISIONS			

PREPARED UNDER THE SUPERVISION OF:

TAIT
Since 1964

701 N. Parkcenter Drive
Santa Ana, CA 92705
p: 714/560/8200 f: 714/560/8211
www.tait.com

Los Angeles Ontario Sacramento San Diego San Francisco Boise Dallas Denver Phoenix Portland

5/5/23
DATE

JACOB VANDERVIS R.C.E. No. C46301

GEOTECHNICAL ENGINEER SEAL

PROJECT NUMBER: ME0381

ENGINEER / DESIGNER: TAIT

PROJECT MANAGER: DM

CHECKED BY: JV

DANA POINT HARBOR REVITALIZATION

Harbor Drive
Dana Point, CA 92629

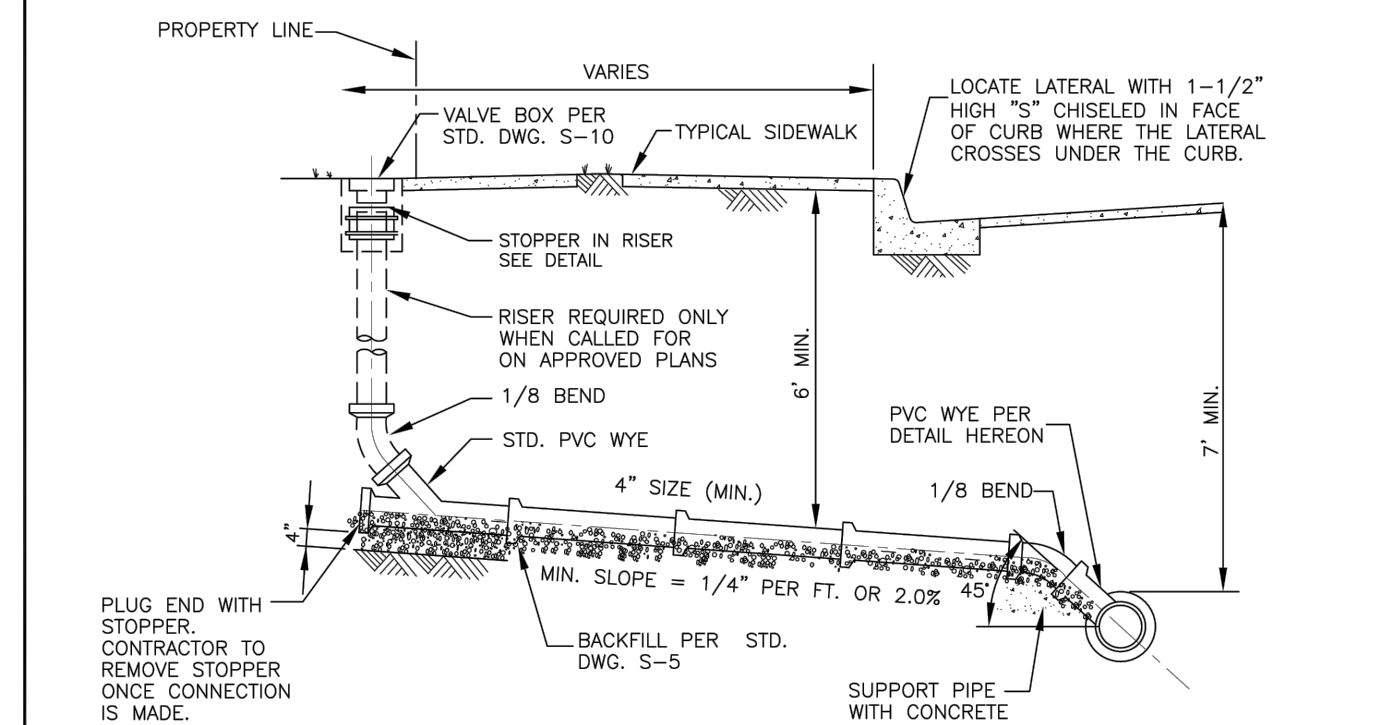
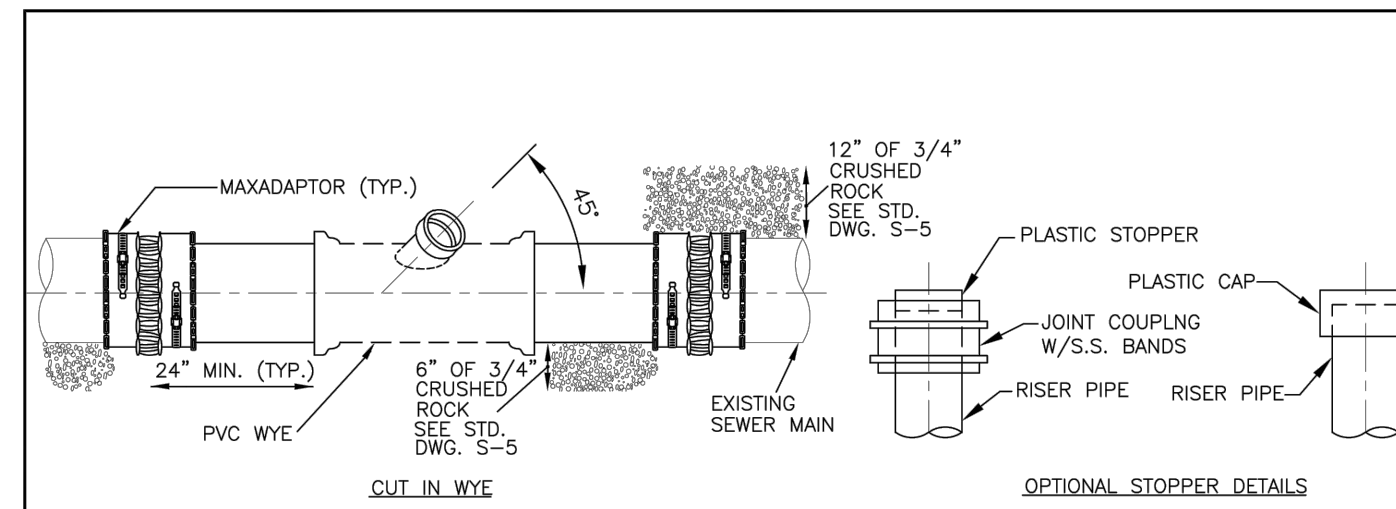
PRIVATE DOMESTIC WATER AND SEWER PLAN
SEWER DETAILS

SCALE:	SEE ON SHEET
DRAWN BY:	TAIT
DATE:	5/5/2023
DRAWING:	ME0381
SHEET NO.:	13

County of Orange - OC Public Works
OC Development Services
APPROVED

This set of plans and specifications must be kept on the job at all times. It is unlawful to make any changes or alterations to these plans without written permission from OC Public Works, OC Development Services of Orange County. The stamping of these plan specifications SHALL NOT be held to permit or be an approval of the violation of any provisions of any County Ordinance or State law.

Hadi Tabatabaee
BUILDING OFFICIAL

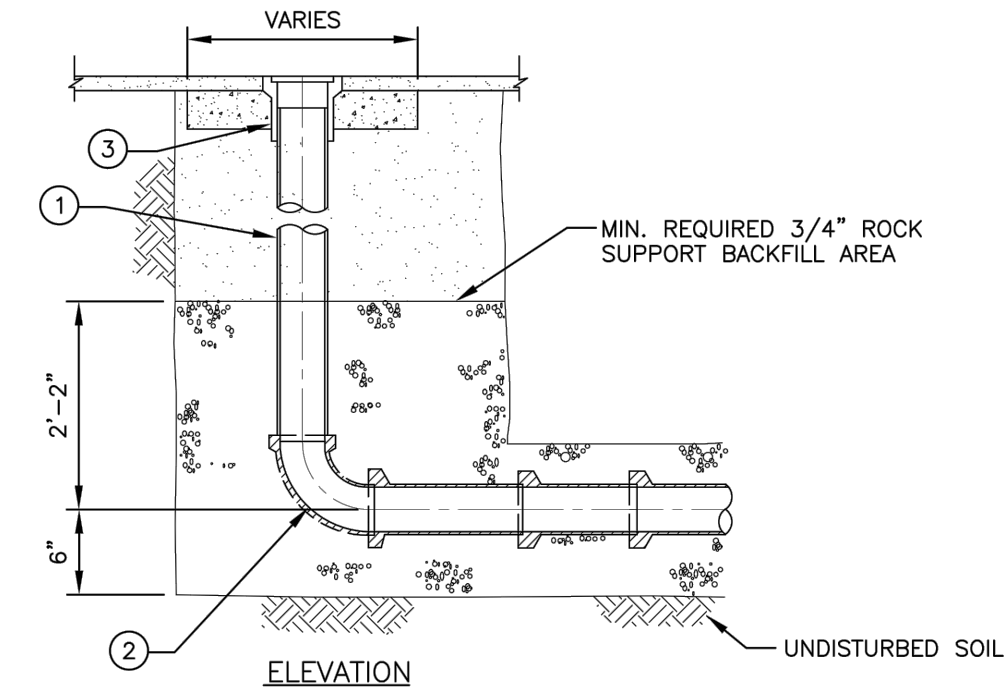
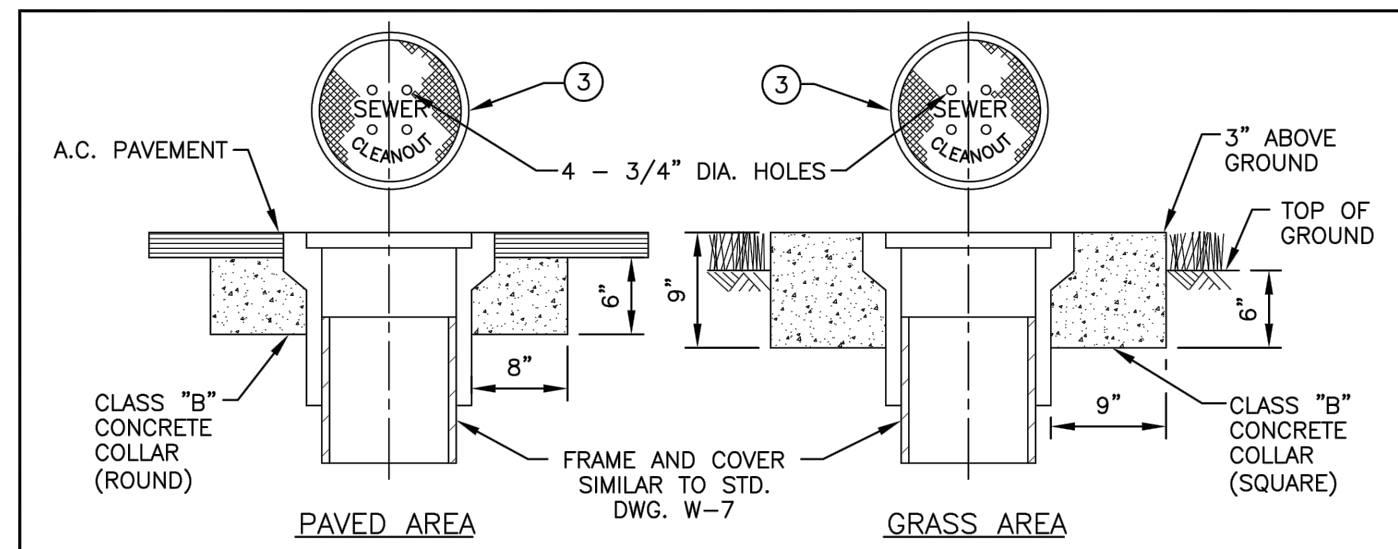


NOTES:

1. IN NO CASE SHALL LATERAL CONNECT DIRECTLY ON TOP OF SEWER MAIN.
2. LATERAL SIZE TO BE DETERMINED BASED ON THE BASIS OF TOTAL NUMBER OF FIXTURE UNITS DRAINED, BUT IN NO CASE SHALL THE LATERAL DIAMETER BE LESS THAN 4 INCHES FOR SINGLE OR MULTIPLE FAMILY RESIDENTIAL AND 6 INCHES FOR COMMERCIAL OR INDUSTRIAL.
3. NO MORE THAN ONE CUT IN WYE WILL BE ALLOWED FOR EACH LENGTH OF EXISTING VCP SEWER MAIN.
4. CONSTRUCT LATERAL TO BE INTO PROPERTY LINE.
5. IF RISER NOT BUILT, PLUG WYE BRANCH WITH STOPPER.
6. SCWD WILL VIDEO EXISTING MAIN AND NEW LATERAL AFTER LATERAL IS BACKFILLED. SCWD SHALL HAVE AT LEAST 48 HOURS ADVANCED NOTICE TO PERFORM VIDEO INSPECTION.
7. SCWD SHALL CONFIRM LOCATION OF TIE INTO EXISTING MAIN BEFORE MAIN IS CUT. PROVIDE 48 HOURS NOTICE.
8. REPAIR DAMAGED PIPE AS DIRECTED BY SCWD.
9. IF MAIN IS LINED, CONTRACTOR SHALL NOT USE SNAP CUTTER. INSTEAD, CONTRACTOR SHALL USE CUTTING TOOL APPROVED BY SCWD.

CUT IN WYE CONNECTION

REVISION	BY	DATE	SOUTH COAST WATER DISTRICT		STD. NO.
ORIGINAL	TK	2018	APPROVED	DATE	S-6
UPDATE			CHIEF ENGINEER		
UPDATE			APPROVED	DATE	SHEET 1 OF 1
			DIRECTOR OF OPERATIONS		



NOTES:

1. CLEANOUT RISER, WHERE REQUIRED, TO BE SAME SIZE AND KIND OF MATERIAL AS MAIN.
2. CLEANOUTS WILL NOT BE USED ON DISTRICT MAINS.
3. SEWER MAINS LARGER THAN 8" SHALL HAVE TERMINAL MANHOLE.
4. USE BAND SEAL RUBBER REDUCER (VCP/PVC) WHEN VCP IS USED.
5. CLEANOUT SHALL NOT BE INSTALLED IN SIDEWALK, WALKWAY, CONCRETE SURFACE AREA, OR ANY PATH OF TRAVEL.
6. CONSTRUCT FRAME, COVER, AND CONCRETE COLLAR PER "PAVED" OR "UNPAVED" CONDITION HEREON.

ITEM	DESCRIPTION	MANUFACTURER	MODEL
1	8" CLEANOUT RISER WHEN CALLED FOR ON PLAN, SEE NOTE 1		
2	8" 45° BEND, LONG RADIUS SWEEP (VCP ONLY)		
3	PRECAST BOX, FRAME, AND COVER MARKED "SEWER CLEANOUT"	BROOKS EISEL ENTERPRISES	H&C #10

SEWER CLEANOUT

REVISION	BY	DATE	SOUTH COAST WATER DISTRICT		STD. NO.
ORIGINAL		2014	APPROVED	DATE	S-10
UPDATE	TK	2020	CHIEF ENGINEER		
UPDATE			APPROVED	DATE	SHEET 1 OF 1
			DIRECTOR OF OPERATIONS		

NO.	DATE	DESCRIPTION	BY
REVISIONS			

PREPARED UNDER THE SUPERVISION OF:

TAIT
Since 1964

701 N. Parkcenter Drive
Santa Ana, CA 92705
p: 714/560/8200 f: 714/560/8211
www.tait.com

Los Angeles Ontario Sacramento San Diego San Francisco Boise Dallas Denver Phoenix Portland

JACOB VANDERVIS R.C.E. No. C46301 DATE 5/5/23

GEOTECHNICAL ENGINEER SEAL

PROJECT NUMBER: ME0381

ENGINEER / DESIGNER: TAIT

PROJECT MANAGER: DM

CHECKED BY: JV

DANA POINT HARBOR REVITALIZATION

Harbor Drive
Dana Point, CA 92629

**PRIVATE DOMESTIC WATER AND SEWER PLAN
SEWER DETAILS**

SCALE:	SEE ON SHEET
DRAWN BY:	TAIT
DATE:	5/5/2023
DRAWING:	ME0381
SHEET NO.:	14